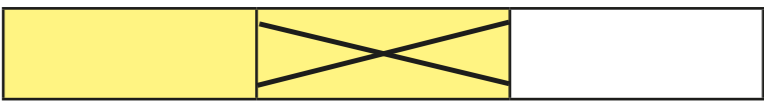


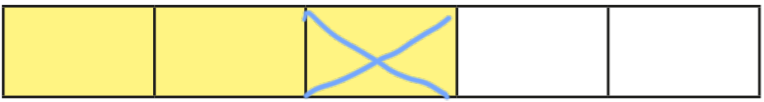
# Subtract fractions


1 Complete the subtractions.

Use the bar models to help you.

a)   $\frac{2}{3} - \frac{1}{3} = \frac{1}{3}$

b)   $\frac{2}{5} - \frac{1}{5} = \frac{1}{5}$

c)   $\frac{3}{5} - \frac{1}{5} = \frac{2}{5}$

d)   $\frac{4}{5} - \frac{1}{5} = \frac{3}{5}$

2 Jack has  $\frac{7}{8}$  of a chocolate bar.

He eats  $\frac{4}{8}$  of the chocolate bar.

What fraction of the chocolate bar does he have left?

Jack has  $\frac{3}{8}$  of the chocolate bar left.



3 Complete the subtractions.

Simplify your answers where possible.

a)  $\frac{7}{10} - \frac{1}{10} = \frac{6}{10} = \frac{3}{5}$

e)  $\frac{8}{12} - \frac{4}{12} = \frac{4}{12} = \frac{1}{3}$

b)  $\frac{7}{10} - \frac{2}{10} = \frac{5}{10} = \frac{1}{2}$

f)  $\frac{9}{12} - \frac{5}{12} = \frac{4}{12} = \frac{1}{3}$

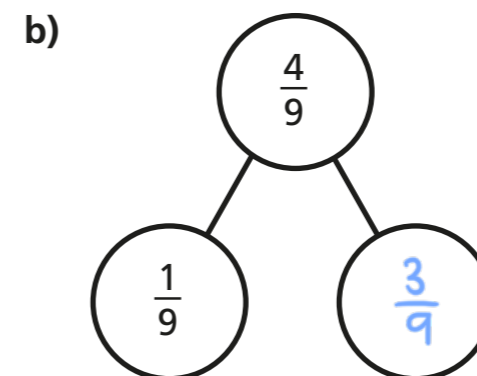
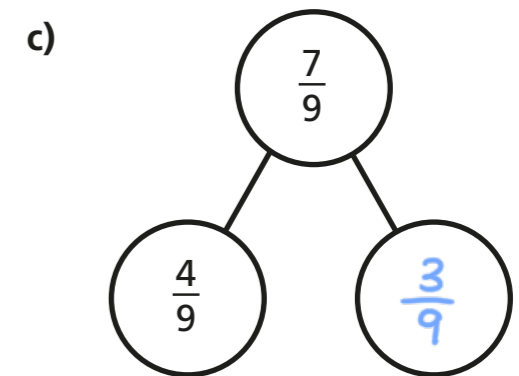
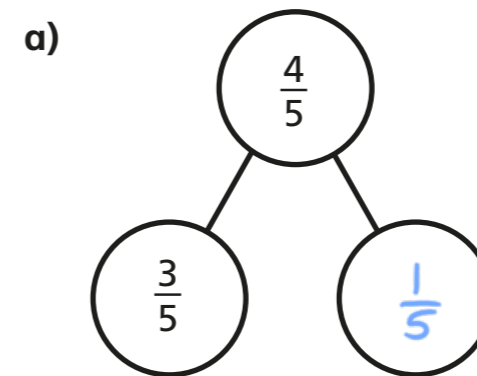
c)  $\frac{7}{10} - \frac{3}{10} = \frac{4}{10} = \frac{2}{5}$

g)  $\frac{9}{59} - \frac{5}{59} = \frac{4}{59}$

d)  $\frac{7}{12} - \frac{3}{12} = \frac{4}{12} = \frac{1}{3}$

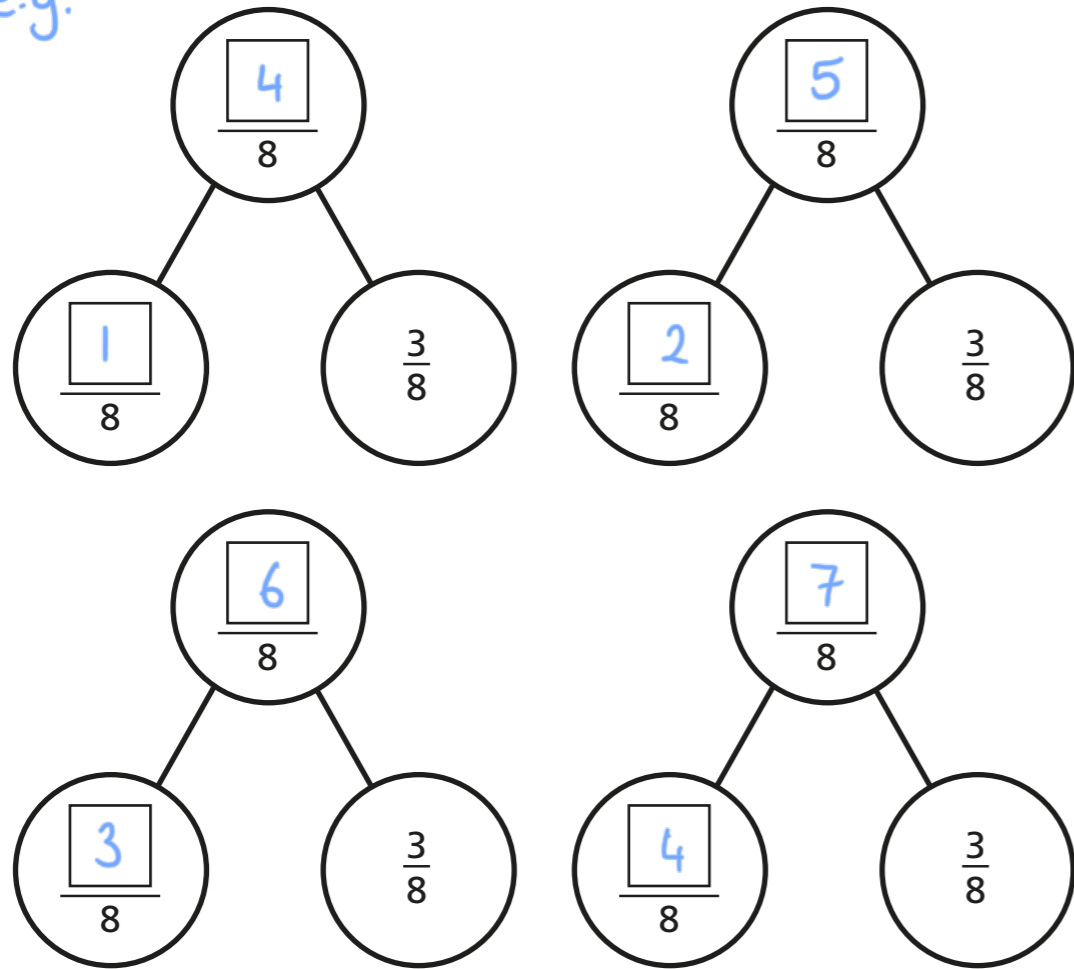
h)  $\frac{13}{127} - \frac{9}{127} = \frac{4}{127}$

4 Complete the part-whole models.



5 Complete the part-whole model in four different ways.

e.g.



6 Kim has read  $\frac{6}{7}$  of her book.

Tom has read  $\frac{2}{7}$  of his book.

a) Shade the bar models to represent this information.



b) How much more has Kim read than Tom?

Kim has read  $\frac{4}{7}$  more of her book than Tom.

7 Write the missing numerators.

a)  $\frac{8}{9} - \frac{\square}{9} = \frac{7}{9}$

e)  $\frac{7}{10} - \frac{5}{10} = \frac{1}{10} + \frac{\square}{10}$

b)  $\frac{5}{11} - \frac{\square}{11} = \frac{4}{11}$

f)  $\frac{\square}{4} - \frac{1}{4} = \frac{1}{4} + \frac{1}{4}$

c)  $\frac{8}{9} - \frac{\square}{9} = \frac{3}{9} + \frac{4}{9}$

g)  $\frac{\square}{5} - \frac{2}{5} = \frac{1}{5} + \frac{2}{5}$

d)  $\frac{7}{9} - \frac{5}{9} = \frac{\square}{9} - \frac{4}{9}$

h)  $\frac{4}{5} + \frac{1}{5} = \frac{3}{7} - \frac{2}{7} + \frac{\square}{7}$

8 Complete the table to show three possible values of the square and triangle.

$\frac{\square}{92} - \frac{\square}{92} = \frac{13}{92}$

e.g.

14	1
20	7
30	17

How many other answers can you find?

