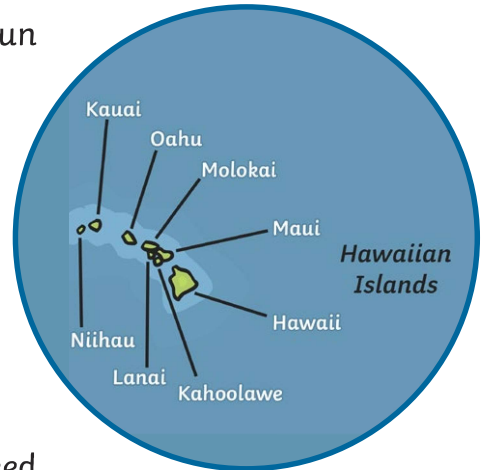


Pearl Harbour

The attack on Pearl Harbour took place during the Second World War on the island of Oahu in Hawaii which is located in the Pacific Ocean. It was carried out by the Empire of Japan on the US Navy and it happened on 7th December 1941.

What Happened before the Attack?

Two years earlier, the Second World War had begun and fighting was extensive throughout Europe and Asia. At this point in time, the United States of America was not part of the war but its navy was based in Hawaii. This worried the Empire of Japan as it was determined to take control of most of Asia and felt the United States could stand in its way. The Empire of Japan was sure a strike from the US Navy would occur soon and so, taking matters into its own hands, it attacked the US Navy first.



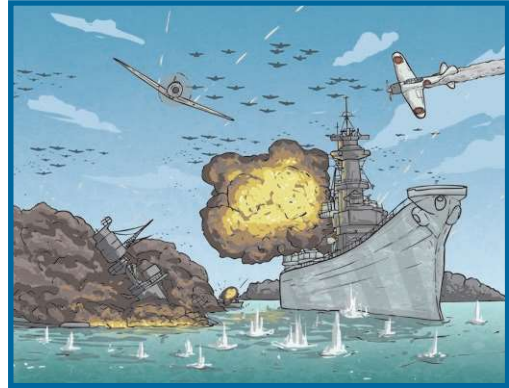
What Happened during the Attack?

On the morning of Sunday 7th December 1941, over 300 Japanese aircraft took to the Hawaiian skies. As they flew over the US warships docked in Pearl Harbour, they dropped bombs, launched torpedoes and fired at the US fighter planes which were still sat outside their hangars. As the attack came without warning, many of the US fighter pilots were unable to make it to their aircraft in order to return fire upon the Japanese planes. The attack lasted about two hours and caused the loss of many US Naval vessels, battleships and planes. Sadly, over 1,000 people were injured and over 2,000 American military personnel were killed.

What Happened after the Attack?

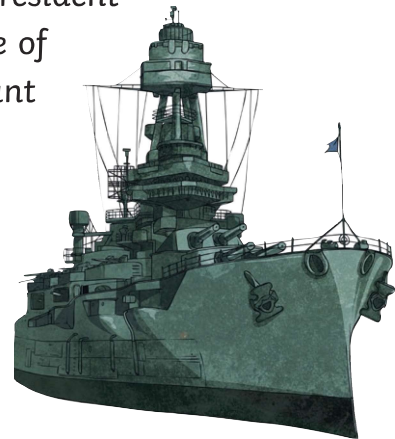
The United States of America, who had up to this point been **semi-neutral** during the Second World War, had no choice but to get involved. Ignoring this attack would have looked like a sign of weakness to the rest of the world. On 8th December 1941, the United States of America declared war on Japan. Three days later, this **declaration** of war saw Japan's allies, Germany and Italy, declare war on the US. Fortunately for the United States, its aircraft carriers were not positioned at the naval base in the harbour at the time of the attack and its supply facilities were also not hit. This meant that although they had suffered

terrible casualties, the United States was still in a strong position when it joined the war. In August 1945, Japan finally surrendered to **Allied** forces after two of their major cities (Hiroshima and Nagasaki) suffered nuclear attacks.



What Is Pearl Harbour like Today?

The USS Arizona was sunk and destroyed during that dreadful day in 1941, with over 1,000 military personnel on board. Today, a memorial stands on the water just above the wreckage of this important US naval ship and is called the USS Arizona Memorial. It was built in 1962 and can only be reached by boat. It has more than two million visitors every year. These visitors have included every president of the United States of America, since President Franklin D Roosevelt (who was president at the time of the horrific attack). This memorial is now an important US National Historic Landmark.



Did You Know...?

- The whole attack only lasted for about 110 minutes.
- The Japanese chose Sunday morning to strike as they knew most of the US military personnel would still be sleeping or eating breakfast.
- The Japanese also used submarines in addition to fighter planes when they hit Pearl Harbour.

Glossary

Allied: The 26 nations who fought together as one in the Second World War.

declaration: An official public statement about something.

semi-neutral: Not completely taking part or giving assistance in a war between others.

USS Arizona: A battle ship built for and by the United States Navy.

Questions

1. What date did the attack happen? Tick one.

- 17th December 1941
- 7th December 1941
- 7th December 1940
- 17th December 1942

2. In which state did the attack happen? Tick one.

- Ohio
- Hawaii
- Hiroshima
- Haiti

3. Fill in the missing words.

Two years earlier, the _____ World War had begun and fighting was extensive throughout _____ and Asia.

4. Name Japan's two allies.

5. In which year did Japan finally surrender to the Allied forces?

6. Explain why the Japanese attacked Pearl Harbour.

7. Why do you think a memorial has been built?

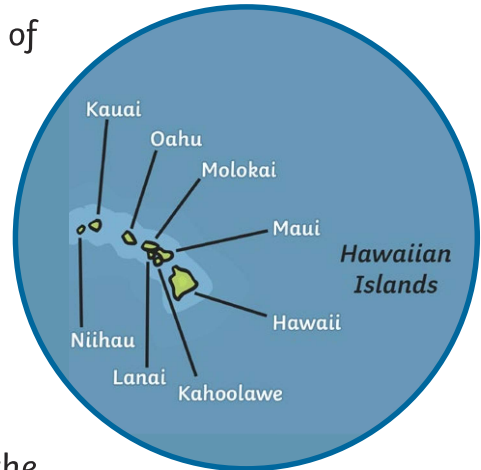
8. Why did the Japanese attack on a Sunday?

Pearl Harbour

The attack on Pearl Harbour occurred during the Second World War on the island of Oahu in Hawaii which is situated in the Pacific Ocean. It was executed by the Empire of Japan on the US Navy and it happened on 7th December 1941.

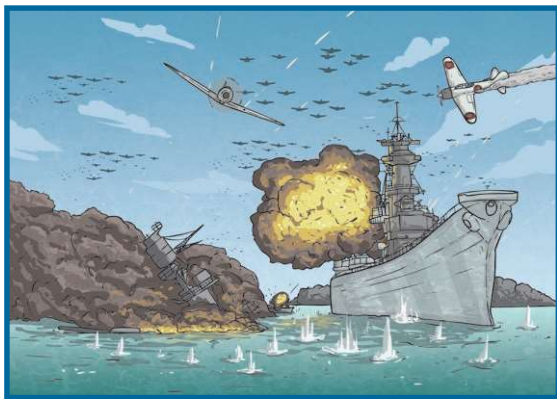
What Happened before the Attack?

Two years earlier, the Second World War had commenced and fighting was rampant throughout parts of Europe and Asia. At this point in time, the United States of America was not involved in the war but its navy was positioned in Hawaii. This was a cause of great irritation to the Empire of Japan as it was determined to take control of most of Asia and felt the United States could stand in its way. The Empire of Japan was sure a strike from the US Navy would arise and so, taking matters into its own hands, it attacked the US Navy first.



What Happened during the Attack?

On the morning of Sunday 7th December 1941, over 300 Japanese aircraft took to the Hawaiian skies. As they flew over the unsuspecting US warships docked in Pearl Harbour, they released bombs, launched torpedoes and fired at the US fighter planes which were still assembled outside of their hangars. As the attack



came without warning, many of the US fighter pilots were unable to reach their aircraft in order to return fire upon the Japanese planes. The attack lasted about two hours and caused the loss of many US Naval vessels, battleships and planes. Regrettably, over 1,000 people were injured and over 2,000 American military personnel were killed.

What Happened after the Attack?

The United States of America, who had up to this point been semi-neutral during the Second World War, had no choice but to get involved. Ignoring this attack would have looked like a sign of weakness to the rest of the world. On 8th December 1941, the United States of America declared war on Japan. Three days later, this declaration of war saw Japan's allies, Germany and Italy, declare war on the US. Fortunately for the United States, its aircraft carriers were not sited at the naval base in the harbour at the time of the attack and its supply facilities were also not targeted. This meant that although they had suffered dreadful casualties, the United States was still in a strong position when it entered the war. In August 1945, Japan finally surrendered to Allied forces after two of their major cities (Hiroshima and Nagasaki) endured nuclear attacks.

What Is Pearl Harbour like Today?

The USS Arizona was sunk and destroyed during that dreadful day in 1941 with over 1,000 military personnel on board. Today, a memorial stands on the water just above the wreckage of this important US naval ship and is called the USS Arizona Memorial. It was built in 1962 and can only be reached by boat. It has more than two million visitors every year. These have included every president of the United States of America since President Franklin D Roosevelt (who was president at the time of the horrific attack). The memorial is now an important US National Historic Landmark.



Did You Know...?

- The whole attack only lasted for about 110 minutes.
- The Japanese chose Sunday morning to strike as they knew most of the US military personnel would still be sleeping or eating breakfast.
- The Japanese also used submarines in addition to fighter planes when they hit Pearl Harbour.

Questions

1. Who carried out the attack on Pearl Harbour? Tick one.

- Germany
- Italy
- The Empire of Japan
- The United States of America

2. Order the following statements from 1-5 to show the order they happened. The first one has been done for you.

- The Japanese surrendered.
- 1 The Second World War started.
- The USS Arizona Memorial was built.
- The attack on Pearl Harbour.
- America declared war against Japan.

3. In which body of water is Hawaii located?

4. Fill in the missing words from this sentence.

The attack lasted about two _____ and caused the loss of many US Naval _____, battleships and planes.

5. Find and copy a word from the text which shows that **the US pilots didn't know the attack was going to happen.**

6. **The USS Arizona was sunk and devastated during that dreadful day in 1941 with over 1,000 military personnel on board.**

Why do you think the author used the word dreadful in this sentence?

7. Why do you think the USS Arizona memorial has over two million visitors every year?

8. **I think less people would have been killed and injured if the US Navy knew the attack was going to happen.**

Do you agree with this statement? Explain your answer.

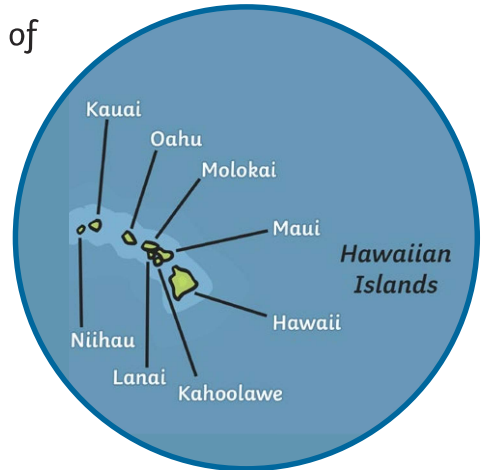
9. How do you think the author feels about this attack? Provide evidence from the text to support your answer.

Pearl Harbour

The attack on Pearl Harbour occurred during the Second World War on the island of Oahu in Hawaii which is situated in the Pacific Ocean. It was implemented by the Empire of Japan on the US Navy and it happened on 7th December 1941.

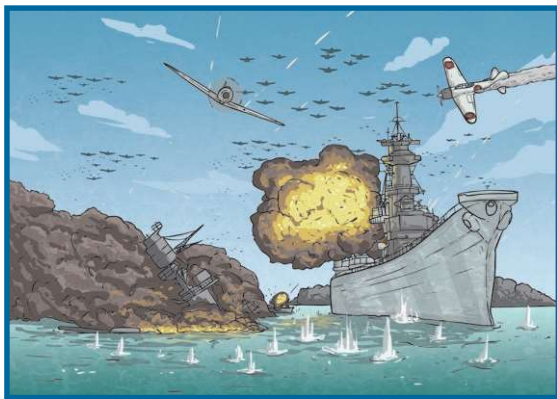
What Happened before the Attack?

Two years earlier, the Second World War had commenced and fighting was rampant throughout parts of Europe and Asia. At this point in time, the United States of America was not embroiled in the war but its navy was stationed in Hawaii. This agitated the Empire of Japan as it was determined to dominate most of Asia and felt the United States could jeopardise its plan. The Empire of Japan was certain a strike from the US Navy would ensue and so, taking matters into its own hands, it attacked the US Navy first.



What Happened during the Attack?

On the morning of Sunday 7th December 1941, over 300 Japanese aircraft took to the Hawaiian skies. As they flew over the oblivious US warships docked in Pearl Harbour, they released bombs, launched torpedoes and fired at the US fighter planes which were still amassed outside of their hangars. As the attack was unanticipated, many of the US fighter pilots were incapable of reaching



their aircraft in order to return fire upon the Japanese planes. The attack lasted about two hours and caused the loss of many US Naval vessels, battleships and planes. Regrettably, over 1,000 people were injured and over 2,000 American military personnel were killed.

What Happened after the Attack?

The United States of America, who had up to this point been semi-neutral during the Second World War, had no choice but to get involved. Ignoring this attack would have been considered a sign of weakness to the rest of the world. On 8th December 1941, the United States of America declared war on Japan. Three days later, this declaration of war saw Japan's allies, Germany and Italy, declare war on the US. Fortunately for the United States, its aircraft carriers were not sited at the naval base in the harbour at the time of the attack and its supply facilities were also not targeted. This meant that although they had endured atrocious casualties, the United States was still in a strong position when it entered the war. In August 1945, Japan finally surrendered to Allied forces after two of their major cities (Hiroshima and Nagasaki) endured nuclear attacks.

What Is Pearl Harbour like Today?

The USS Arizona was sunk and devastated during that dreadful day in 1941 with over 1,000 military personnel on board. Today, a memorial straddles the wreckage of this important US naval ship and is called the USS Arizona Memorial. It was built in 1962 and can only be reached by boat. It has more than two million visitors every year, which have included every president of the United States of America, since President Franklin D Roosevelt (who was president at the time of the abominable attack).



The memorial is now a significant US National Historic Landmark.

Did You Know...?

- The whole attack only lasted for about 110 minutes.
- The Japanese chose Sunday morning to strike as they knew most of the US military personnel would still be sleeping or eating breakfast.
- The Japanese also used submarines in addition to fighter planes when they hit Pearl Harbour.

Questions

1. **It was implemented by the Empire of Japan on the US Navy and it happened on 7th December 1941.**

What does **implemented** mean? Tick one.

- carried out
 rejected
 discussed
 refused

2. Which event occurred last? Tick one.

- The attack on Pearl Harbour.
 The start of the Second World War.
 The Japanese surrendered.
 The US declared war against Japan.
 Japan, Germany and Italy declared war against the US.

3. **This agitated the Empire of Japan as it was determined to dominate most of Asia and felt the United States could stand in its way.**

Write a synonym for the word **agitated**.

4. Find and copy **two** things the Japanese did as they flew over the warships docked in Pearl Harbour.

5. Find and copy one sentence which shows that **the US military had suffered many losses**.

6. Explain why the author has organised this text with questions as subheadings.

Questions

7. Summarise what you have read in the second paragraph in one sentence.

8. Why do you think every American President has visited the USS Arizona Memorial?

9. Explain how the outcome of that day might have been changed if the US Navy had learnt about the attack before it happened.

10. Why did the Japanese attack on a Sunday?
