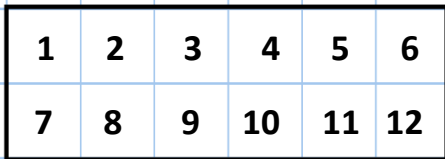


Counting squares

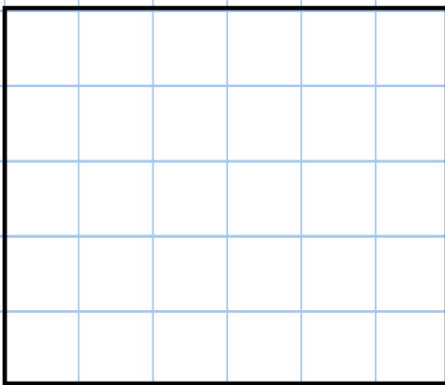
Find the areas of these shapes by counting the squares. The first one has been done for you.



A = 12 squares



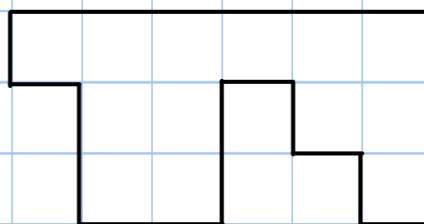
A = 9 squares



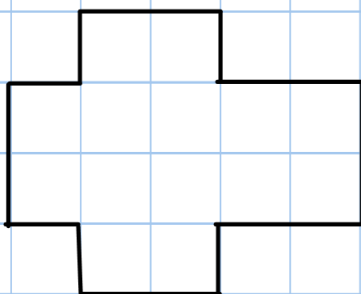
A = 30 squares



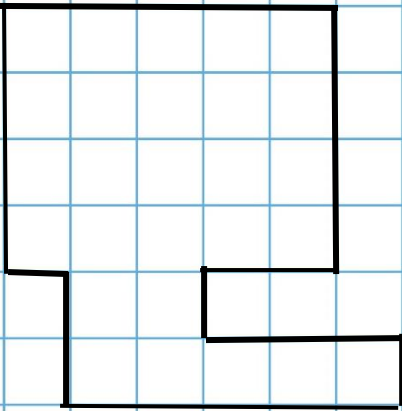
A = 7 squares



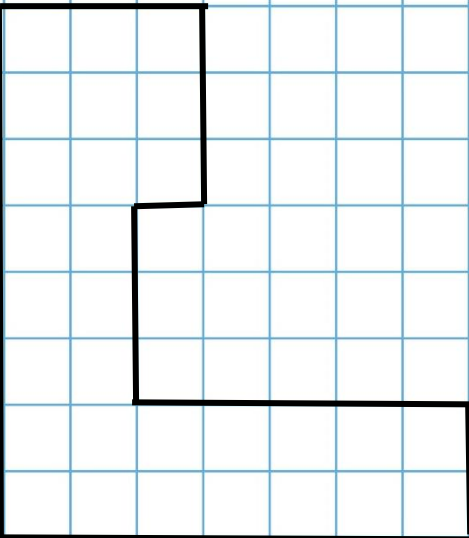
A = 13 squares



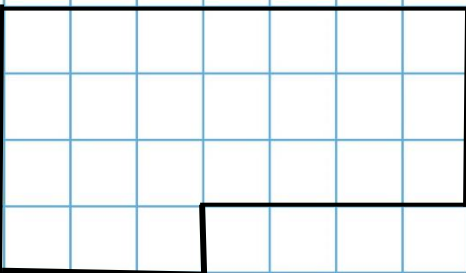
A = 14 squares



$$A = \underline{2 \ 7} \text{ squares}$$



$$A = \underline{2 \ 9} \text{ squares}$$



$$A = \underline{2 \ 4} \text{ squares}$$