

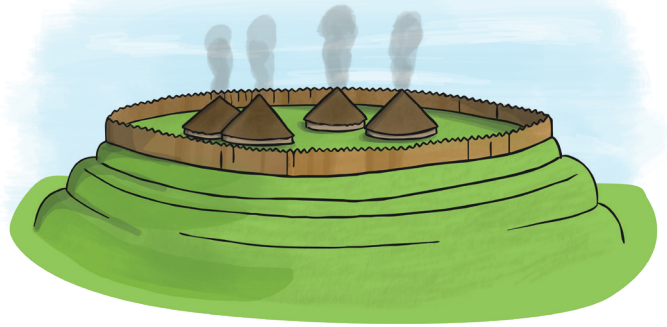
**13,000BC**



**People make cave paintings**

twinkl.com

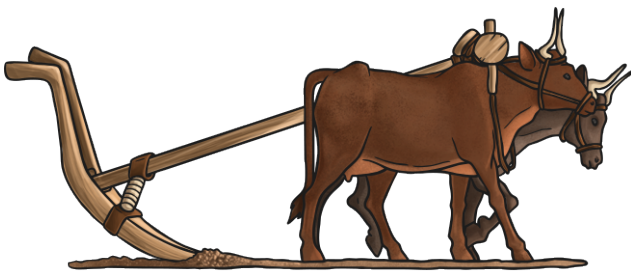
**800-700BC**



**The first hill forts are made.**

twinkl.com

**4,500-3,500BC**



**Farming starts and begins to spread.**

twinkl.com

**100BC**



**Coins are made and used for the first time.**

twinkl.com

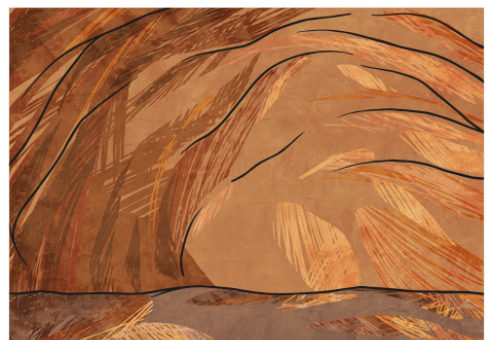
**2,500BC**



**Metal starts to be used.**

twinkl.com

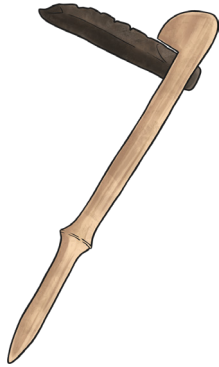
**1,800BC**



**The first copper mines are dug.**

twinkl.com

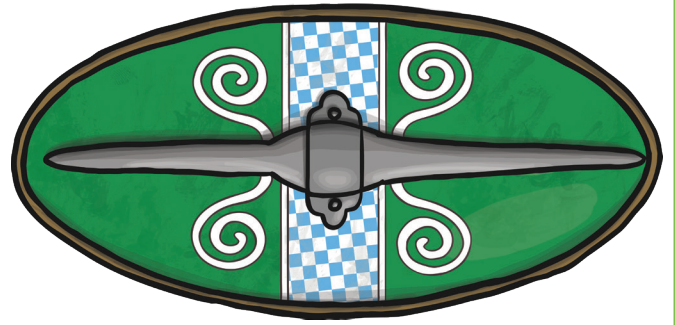
**1,200-800BC**



**Metal tools  
are made and used.**

twinkl.com

**1,200-800BC**



**Tribal kingdoms  
and celtic culture.**

twinkl.com

**700-500BC**



**Iron is used a lot more  
than before.**

twinkl.com

**AD43**



**The final Roman invasion  
of Britain**

twinkl.com

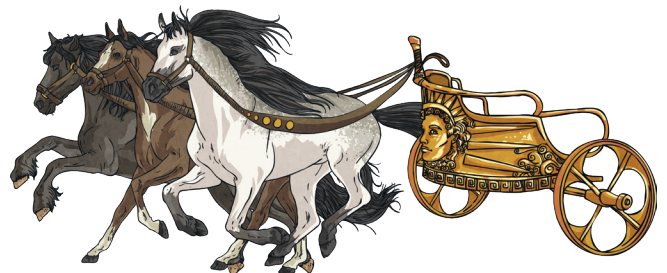
**4,500-3,500BC**



**The first pottery is  
made and used.**

twinkl.com

**4,000-3,000BC**



**People start to ride  
and use horses.**

twinkl.com

# Stone Age to Iron Age

## Answers

1. 13,000BC
2. 4,500 - 3,500BC
3. 4,500 - 3,500BC
4. 4,000 - 3,000BC
5. 2,500BC
6. 1,800BC
7. 1,200 - 800BC
8. 1,200 - 800BC
9. 800 - 700BC
10. 700 - 500BC
11. 100BC
12. AD43