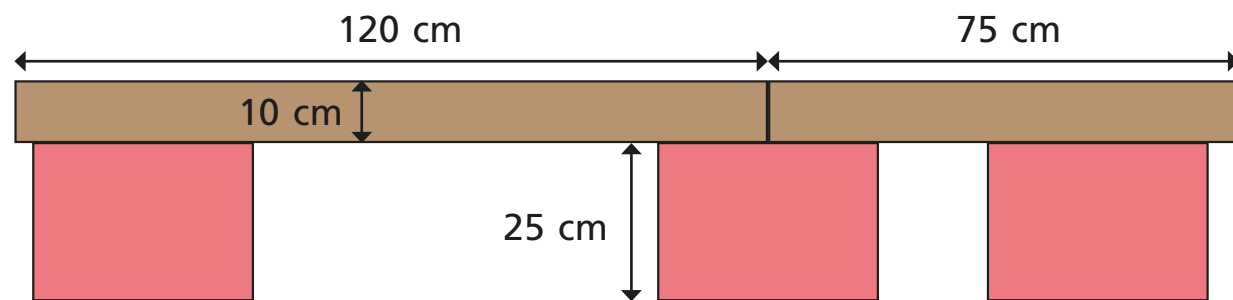


Add lengths

- 1 Scott builds a bridge using planks.



- a) What is the total length of his bridge?

195 cm

- b) What is the height of his bridge?

35 cm

- 2 Complete the additions.

a) $25 \text{ cm} + 75 \text{ cm} = 1 \text{ m}$

b) $10 \text{ cm} + 50 \text{ mm} = 15 \text{ cm}$

c) $1 \text{ m } 20 \text{ cm} + 80 \text{ cm} = 2 \text{ m}$

d) $52 \text{ mm} + 8 \text{ mm} = 6 \text{ cm}$

- 3 Brett is 115 cm tall.
His brother is 20 cm taller.
How tall is Brett's brother?

Write your answer in metres and centimetres.

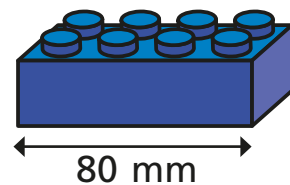
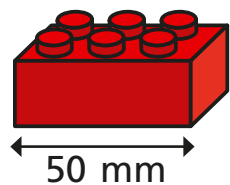
1 m and 35 cm

- 4 Dora builds a tower that measures 1 m and 5 cm.
Annie builds a tower that measures 80 cm.
Dexter builds a tower that measures 95 cm.
They put their towers together to make one high tower.
How tall is their new tower?

The new tower is 280 cm tall.

This is the same as 2 m and 80 cm.

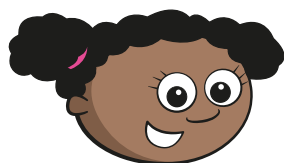
- 5 Red bricks are 50 mm long.
Blue bricks are 80 mm long.



- a) Whitney and Eva make patterns using the bricks.

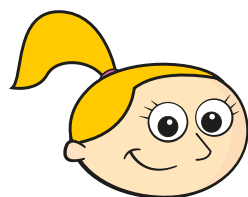
How long is each pattern?

Give your answers in centimetres.



Whitney

Whitney's pattern is 26 cm long.



Eva

Eva's pattern is 37 cm long.

- b) Draw some red and blue bricks to make a pattern that would be exactly 36 cm long.

e.g.

R R B B R R

- 6 Jack, Tommy and Alex took part in a hop, skip and jump competition.

Their distances are shown in the table below.

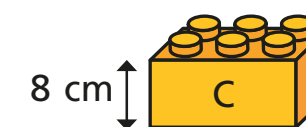
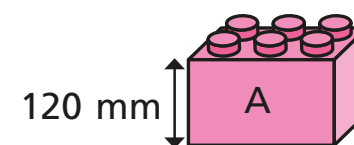
Complete the table to show the total distance each child travelled.

Name	Hop	Skip	Jump	Total
Jack	80 cm	60 cm	1 m 20 cm	2m 60cm
Tommy	70 cm	1 m	1 m 10 cm	2m 80cm
Alex	75 cm	75 cm	1 m	2m 50cm

- 7 Esther builds a tower using some bricks.

Her tower is 24 cm tall.

Which bricks could she have used?



Various answers

How many different answers can you find?