

# Tourism Impacts - Mo

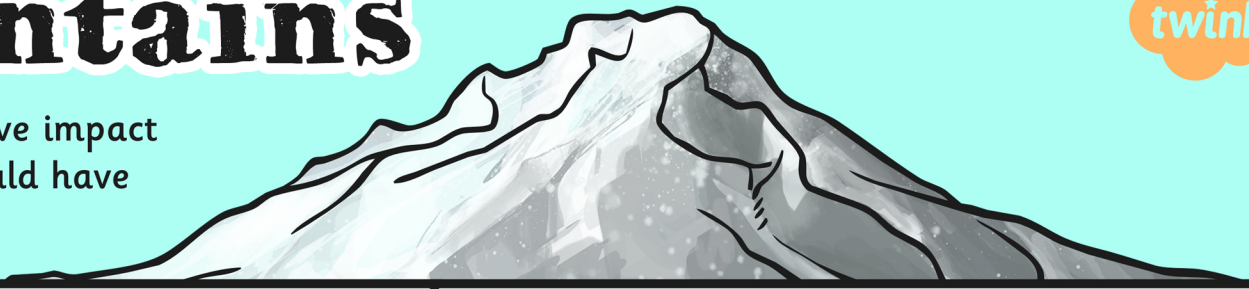
Sort the cards into the different types of impacts, then decide if each has a positive or negative effect on the area. Can you rank the negative cards from 1 to 8 to show which effect you think has the biggest impact and which would have the least impact? How about the positive cards?

	Economic Impacts	Social Impacts
Positive Effect		
Negative Effect		

# Mountains



or negative impact  
think would have  
effects?



Social Impacts	Environmental Impacts

Increased pollution from cars, buses and planes.

Money spent by tourists may go into the local economy – e.g. money spent in locally owned cafes and hotels.

Increased employment opportunities for those living in the area.

Increased numbers of visitors may cause damage to ecosystems through erosion.

More buildings, such as restaurants and hotels, which can destroy habitats.

Tourism can help educate people about the risks facing our planet.

Tourism may help keep alive traditions and crafts through heritage centres and local businesses.

Areas may lose their individuality by becoming holiday resorts with chain hotels and restaurants.

Improved recreational facilities for those living in the area.

Some tourist attractions, such as nature reserves, may help protect wildlife and ecosystems.

Improved infrastructure, such as travel and communication links, for those living in the area.

Increased property prices may make buying a house unaffordable for local people.

Changes to employment opportunities in an area may lead to a decline in the uptake of traditional jobs.

Increased numbers of visitors may bring increased noise and disruption for locals.

Money spent by tourists may not go into the local economy but to the owners of larger hotel and restaurant chains.