

1 Here are some angles.

a) Which angle is greater than a right angle?



b) Which angle is less than 90 degrees?



2 Draw three different angles that are less than a right angle.

Compare answers with a partner.

Complete the sentence.

These are all examples of \_\_\_\_\_ angles.

3 Draw two different obtuse angles.

Compare answers with a partner.

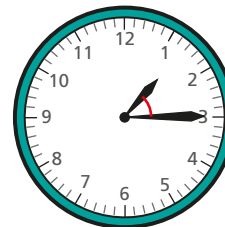
Complete the sentence.

Obtuse angles are greater than  degrees

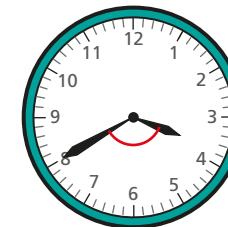
but less than  degrees.

4 Is the angle between the hands of the clock acute or obtuse?

a)



b)

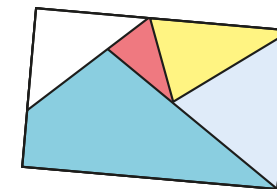


5 Here is a piece of wallpaper.

a) Find two right angles on the wallpaper.

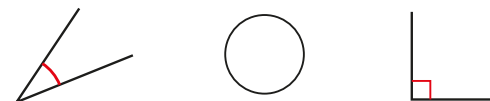
b) Find four acute angles on the wallpaper.

c) Find two obtuse angles on the wallpaper.

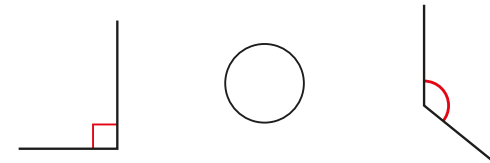


6 Write  $<$ ,  $>$  or  $=$  to compare the sizes of the angles.

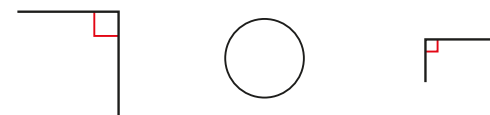
a)



b)



c)



7 Draw a shape that has one right angle, two acute angles and one obtuse angle.

Compare answers with a partner.

What is the same and what is different about your shapes?

