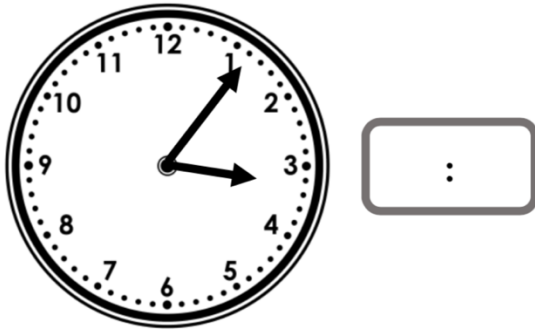


Analogue to Digital – 12 Hour

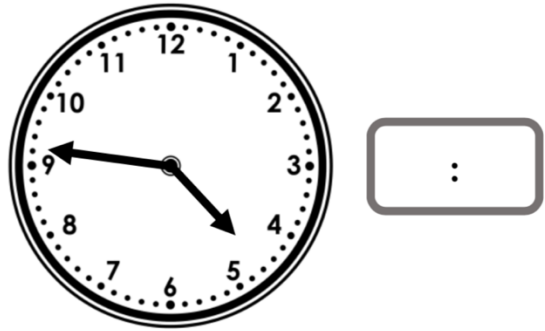
Analogue to Digital – 12 Hour

5a. Convert this to digital time.



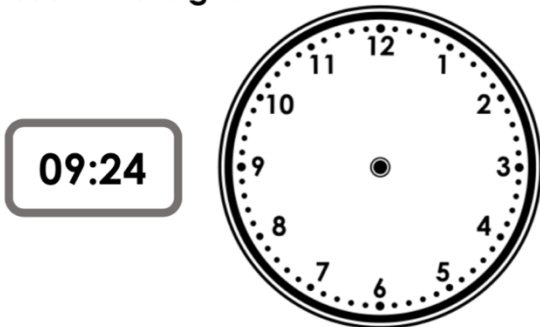
VF

5b. Convert this to digital time.



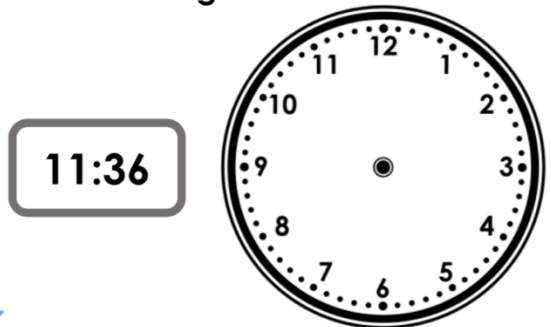
VF

6a. Draw the hands on the clock face to represent the digital time.



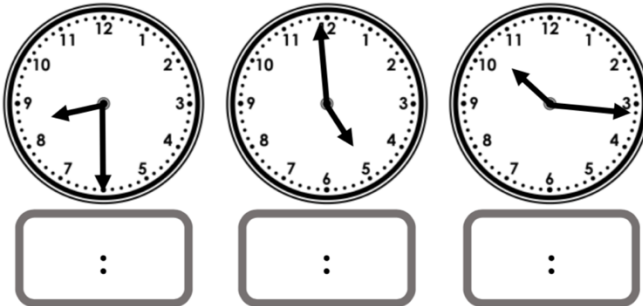
VF

6b. Draw the hands on the clock face to represent the digital time.



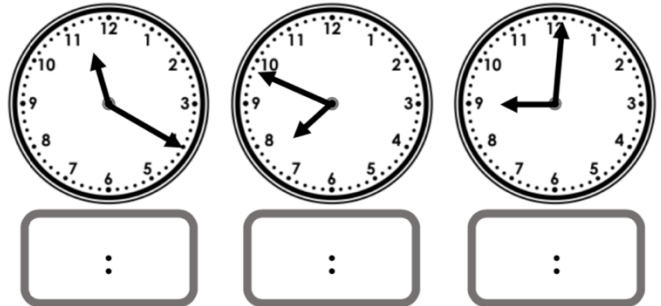
VF

7a. Convert these am times to digital and order them from earliest to latest.



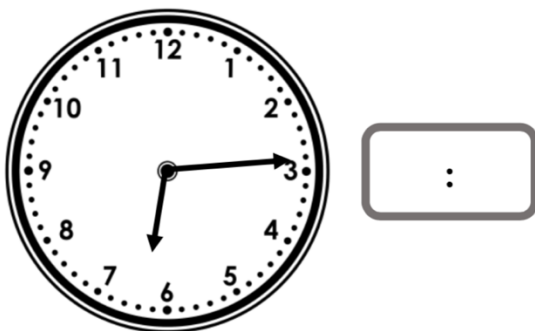
VF

7b. Convert these pm times to digital and order them from latest to earliest.



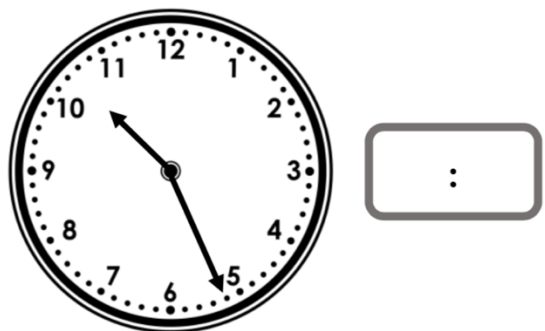
VF

8a. What would the digital time be if it was 12 minutes later than the time shown on the clock?



VF

8b. What would the digital time be if it was 16 minutes earlier than the time shown on the clock?



VF