



1) Use the symbols  $<$ ,  $>$  and  $=$  to compare the durations.

- a) 12 p.m. – 3 p.m.  3 p.m. – 5 p.m.      c) 12 p.m. – 1:00 p.m.  12:00 a.m. – 1:00 p.m.
- b) 07:00 a.m. – 09:00 a.m.  07:00 p.m. – 09:00 p.m.      d) 1:00 a.m. – 2:00 a.m.  11:00 a.m. – 12:30 p.m.

2) Use the timetable to complete the sentences about the duration of train journeys.

Destination	Train Departs	Train Arrives
Birmingham	07:45 a.m.	9:15 a.m.
London	08:30 a.m.	10:00 a.m.
Manchester	1:30 p.m.	3:10 p.m.

- a) The duration of the train to Birmingham is \_\_\_\_\_ hour \_\_\_\_\_ minutes.
- b) The train journey to London is \_\_\_\_\_ than the journey to Manchester.
- c) The train journey to Manchester is \_\_\_\_\_ than the journey to Birmingham.

Use  $<$ ,  $>$  or  $=$  to make this statement correct.

- d) London  Manchester  Birmingham.

3) Which is the shortest duration of time? Circle the correct answer.

- a) 12:15 14:30      c)
- b) 10:30 a.m. 12:00 p.m.



1) Year 3 are using a stopwatch to record durations of events at a sports day. Each time is in minutes and seconds.

02:15

02:30

02:25

a) Which of the times would you choose if you wanted to win in a race? Explain fully.

---



---

b) Which of the times would you choose if you wanted to show how long you could sprint before stopping? Explain how you know.

---



---

2) Two friends are discussing their school journeys.



Francis

I left home at 07:55 a.m. and arrived at school at 08:30 a.m.

I left home at 08:00 a.m. and arrived at school at 08:35 a.m.



Toby

What is the same and what is different about their journeys?

---



---

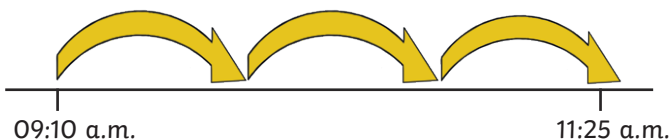
3) Year 3 are checking their work on durations of time.

Give two examples showing how James' number line can be completed.



James

I want to complete the number line in three steps or less.





1) Year 3 are discussing how quickly they ran the cross-country course during running club.

I started running at 03:40 p.m. and finished at 04:30 p.m.



Jim



Anna

I ran for fifty minutes.

My watch showed 15:25 when I started running and 16:45 when I finished.



Ramesh

Which child ran the the slowest around the cross-country course? Explain your answer.

---

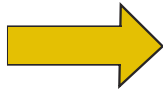
---

---

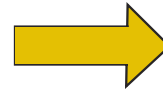
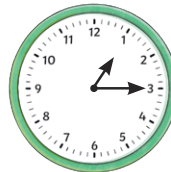
---

2) What is the difference between the durations shown on the digital 24-hour and analogue clocks? Use number lines to help when calculating your answer.

04:30



07:05



---

---

3) Using number lines, find 3 different ways to calculate the duration between the times shown.

11:10 a.m. 09:25 p.m.

---

---

---