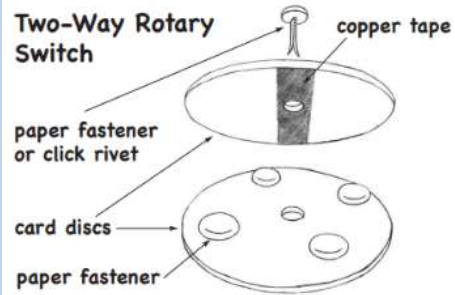


Skills

Knowledge

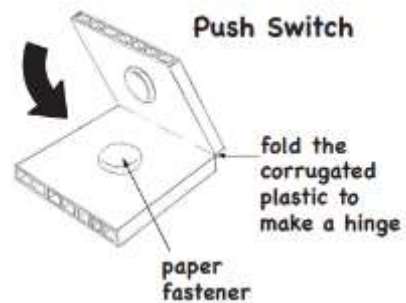
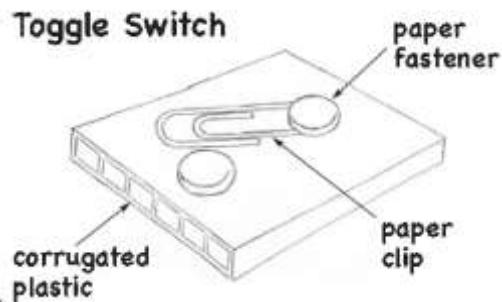
Vocabulary

Using different types of switches within a circuit



This exploded diagram shows how to make the switch.

This switch can control two separate bulbs.



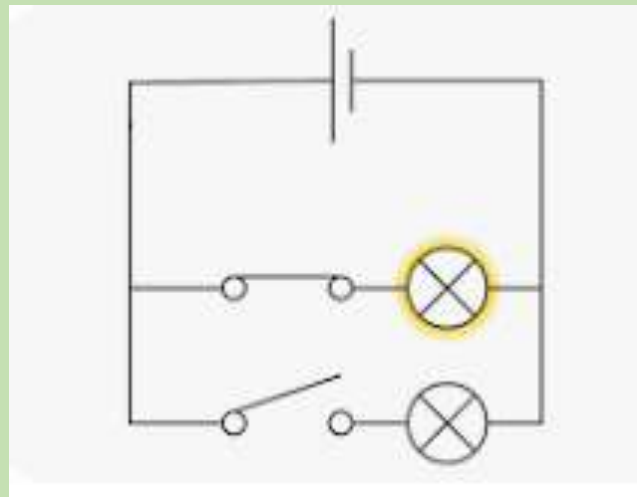
Computer Games Design

A Computer Games Designer at Rebellion uses skills such as working with others to develop ideas and learning about



perspective and the importance of the links between the engineering and creative sides in the industry.

Parallel Circuit



- **A parallel circuit** comprises of branches so that the current divides and only part of it flows through any branch.
- **Electrical conductors** are materials that allow an electric charge to pass through them without difficulty.

Recall: Can you remember what these words mean?

- construction
- materials
- purpose
- design brief
- series circuit
- fault
- connection
- battery
- battery holder
- bulb
- bulb holder
- wire
- insulator
- conductor
- crocodile clip

