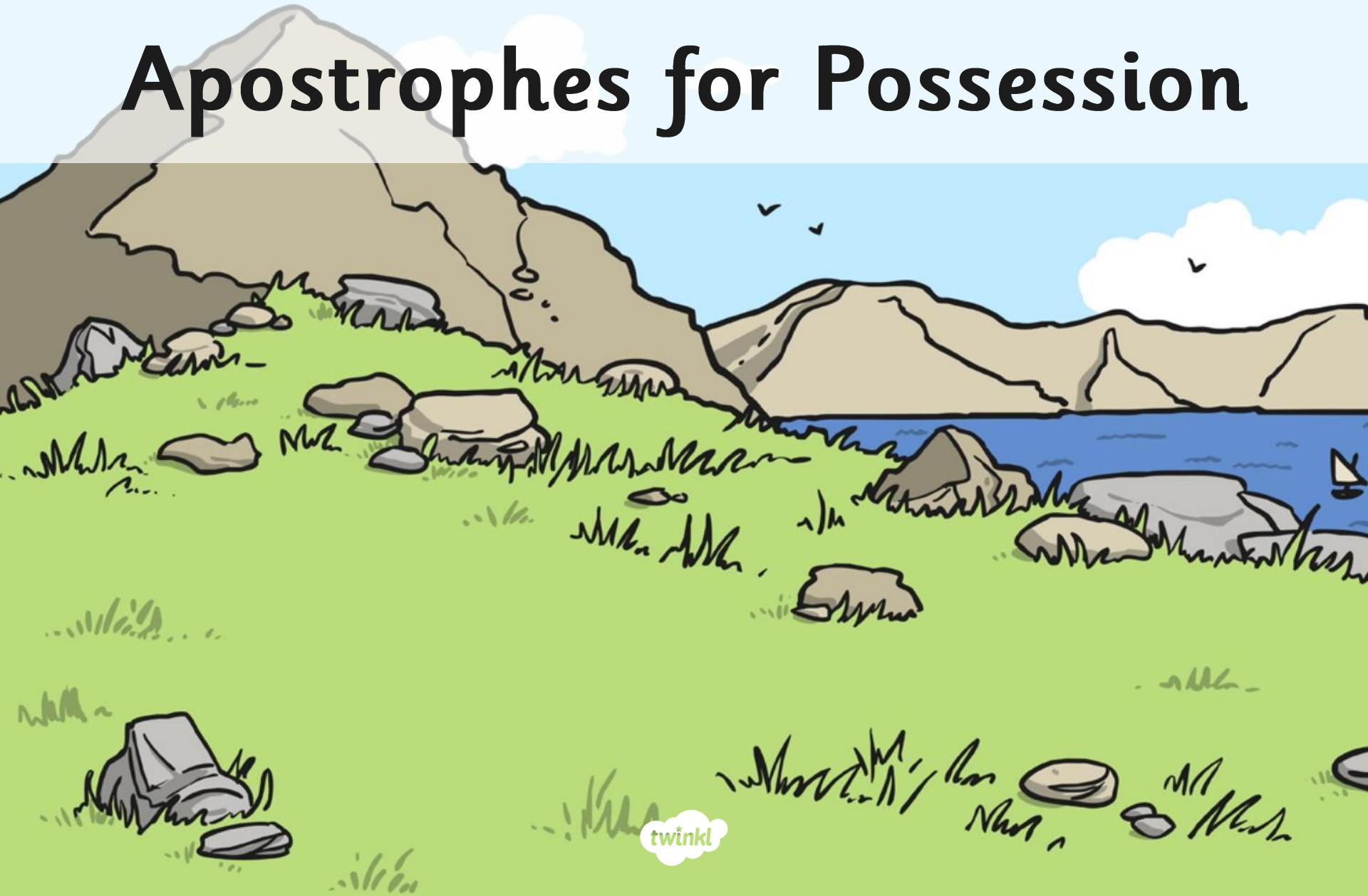
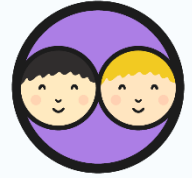


Apostrophes for Possession



Who Does It Belong To?

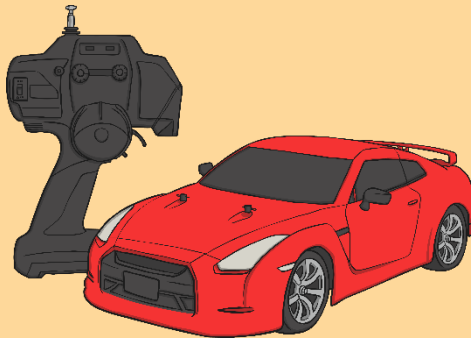


Possession

When we own or have something it is called possession.



The blue bike belongs to Isa.

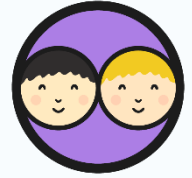


The red car belongs to Jodie.



The football belongs to Samera.

Who Does It Belong To?



Work with your partner to work out which item belongs to each child and write a sentence on your whiteboard to explain. The first one has been done for you.

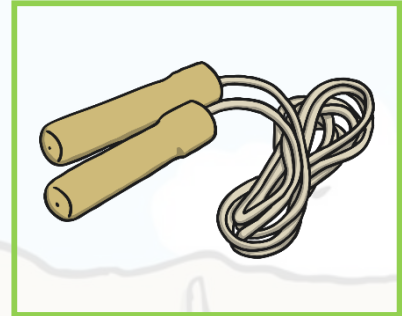
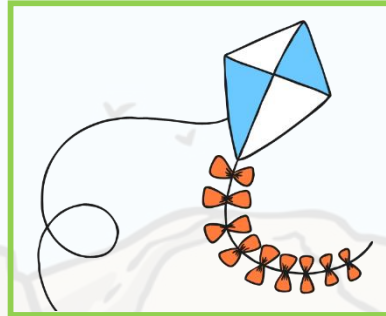
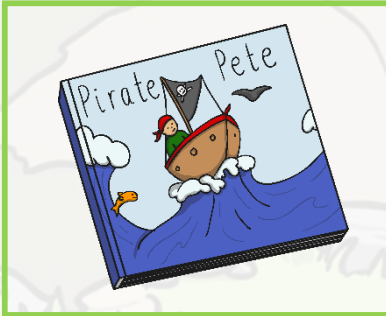
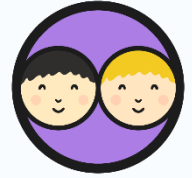
I love to
ride my bike



Jacob

The blue bike
belongs to Jacob.

Who Does It Belong To?

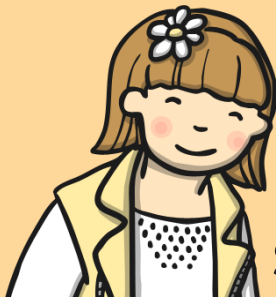


My skateboard is very fast.

This kite is amazing.

I love my skipping rope.

This is my favourite book.



Sophie



Jared



Anna



Aqueeb

Apostrophes to Show Possession



Sometimes using the words **belongs to** doesn't sound right.

For example if we were introducing someone we wouldn't say:

These are the parents that belong to Maddison.

What do you think we would say?

We would probably say:

These are Maddison's parents.



Apostrophes to Show Possession



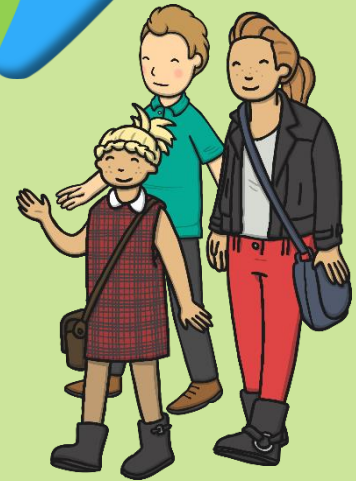
These are Maddison's parents.

What do you notice about this sentence?
Look at the name Maddison.

This sentence contains an apostrophe.

The apostrophe in this sentence tells us that the parents belong to Maddison.

We need the apostrophe to make it clear to our reader who it belongs to.



Apostrophes to Show Possession



When we say something belongs to someone, we add an 's' to the end of the word. However we also do this when the word becomes plural.

So we add an apostrophe before the 's' to show our reader we mean 'belongs to'.

one cat



The cat's bed



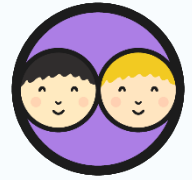
two cats



The dog's bed



Apostrophes to Show Possession



On your whiteboards, rewrite the sentences below so that they contain an apostrophe. The first one has been done for you.

Remember when we are showing that something belongs to one person, we add the apostrophe before the 's'.

Everybody liked the green and yellow bag
that belongs to Umar.

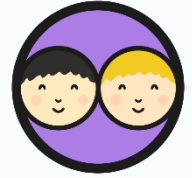


Everybody liked Umar's green and yellow bag.

The cute kitten
belongs to Romy.

The toy castle
belongs to Zuhara.

Spot the Possessive Apostrophe



When we want to show that something belongs to someone, we use an apostrophe.

But we also use an apostrophe to show that there are letters missing in words.

Look at the two sentences below:

Jabriel's mum baked the delicious chocolate cake.

There wasn't much of it left when dad got home.



Which of these sentences includes a possessive apostrophe?

Hint – remember the apostrophe tells us who something or someone belongs to.