

Problem solving with time

1 Which has more hours in it?

Tick your answer.

a day

a week ✓

Explain how you know.

a week is longer than a day.
a day is 24 hours, a week is 168

Compare answers with a partner.



2 a) Kim's music lesson starts at 12:45 pm.

The music lesson lasts 25 minutes.

What time does Kim's music lesson end?

1:10 pm

b) Amir's PE lesson starts at 10:20 am.

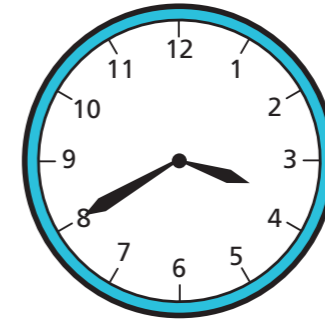
The lesson finishes at 10:55 am.

How long is Amir's PE lesson?

35 minutes

3 Whitney is baking a cake.

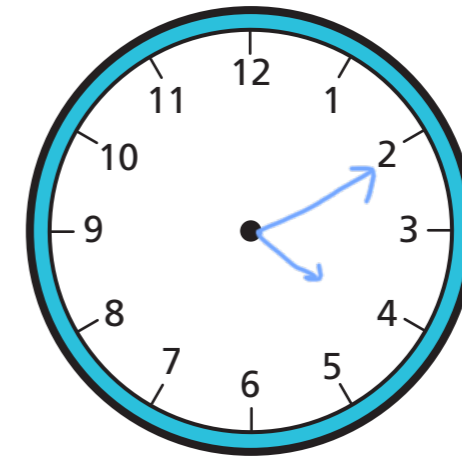
She looks at the clock before she puts the cake into the oven.



The cake needs to be in the oven for 30 minutes.

At what time should she take the cake out of the oven?

Draw the hands at the correct time.



4 Put the durations of time in order, starting with the shortest time.

one hour	1 minute	45 seconds	a quarter of an hour
----------	----------	------------	----------------------

45 seconds, 1 minute, a quarter of an hour, one hour

5 Which is the longer duration?

Tick your answer.

7 weeks ✓

1 March to 15 April

Show all your workings.

7 weeks is 49 days
1 March to 15 April is 45 days

6 Mr Singh hires a bike.

Here are the prices.

He hires the bike from 10:30 am until 1:30 pm.

How much does it cost Mr Singh to hire the bike?

Holiday Bikes	
First hour	£12
Every additional half hour	£5

£ 32

7 A TV programme starts at 7:30 pm.

It lasts for three-quarters of an hour.

What time does the programme finish?

8:15 pm

8 How many minutes are there between these two times?

1:32 pm

15:25

113 minutes

9 Annie runs between these cones.

The times show the number of seconds since she started running.



0 seconds



16 seconds



52 seconds

a) How long does Annie take to reach the 3rd cone?

52 seconds

b) How long does Annie take to run between the 1st and 2nd cones?

16 seconds

c) How long does Annie take to run between the 2nd and 3rd cones?

36 seconds

d) Why might Annie take longer to run between the 2nd and 3rd cones compared with the 1st and 2nd cones?