

24-hour clock

1 Here are some times.



a) Write the times into the correct part of the table.

am	pm
06:15	13:07
01:36	15:19
09:29	19:53
04:42	21:40
08:00	20:00

How did you know which time went where?
Talk to a partner.

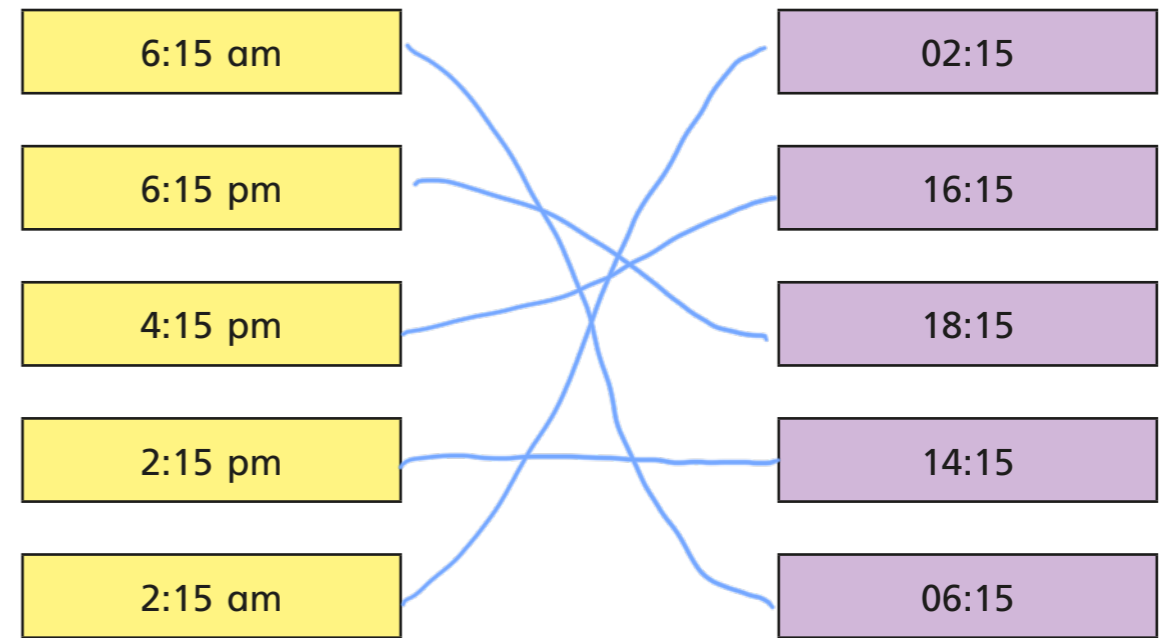
b) Kim gets up at 8:00 am.

Which of the times from the table is this? 08:00

c) Scott goes to bed at 8:00 pm.

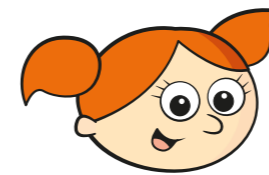
Which of the times from the table is this? 20:00

2 Match the times.

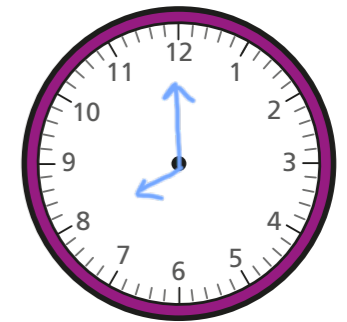


3 Alex is planning her day.

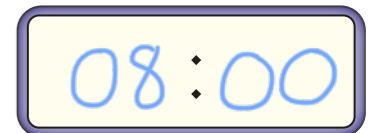
a)



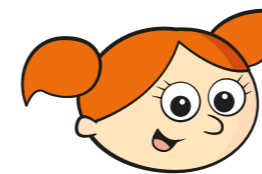
I will go to school at 8 o'clock in the morning.



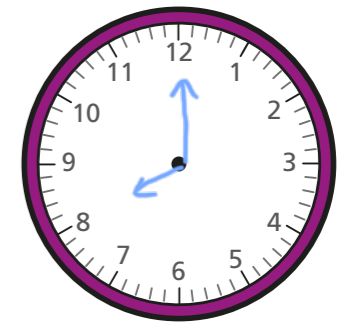
Show this time on each clock.
Use 24-hour time on the digital clock.



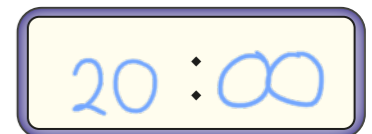
b)



I will go to bed at 8:00 pm.



Show this time on each clock.
Use 24-hour time on the digital clock.

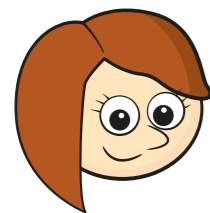
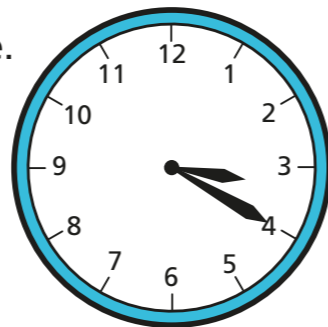


What is the same about your answers to parts a) and b)?
What is different?

4 Complete the sentences.

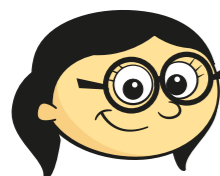
- a) 07:45 is quarter to 8 in the morning.
- b) 13:40 is twenty to 2 in the afternoon.
- c) 08:25 is twenty-five past 8 in the morning.
- d) 19:15 is quarter past 7 in the evening.
- e) 15:45 is quarter to 4 in the afternoon.

5 Rosie, Ron, Annie and Mo are telling the time.



It is 03:20

Rosie



It is 3:20 am.

Annie

It is 15:20



Ron

It is 3:20 pm.



Mo

Who is correct? Circle your answer.

Rosie Ron Annie Mo can't tell

Talk about it with a partner.

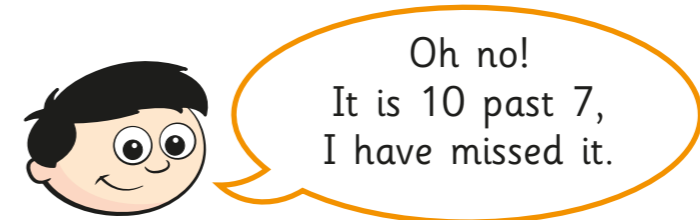
6 Write the times as 24-hour clock times.

- a) 3:27 am 03:27
- b) 3:27 pm 15:27
- 2:27 am 02:27
- 4:27 pm 16:27
- 1:27 am 01:27
- 5:27 pm 17:27
- 12:27 am 00:27
- 6:27 pm 18:27

7 Write the 24-hour clock times using am and pm.

- a) 04:14 4:14 am
- b) 09:41 9:41 am
- c) 12:56 12:56 pm
- d) 00:56 12:56 am
- e) 13:27 1:27 pm
- f) 19:17 7:17 pm
- g) 20:48 8:48 pm
- h) 23:09 11:09 pm

8 Dexter wants to watch a programme at 6:00 pm. He looks at his clock and it shows this time.



Is Dexter correct? No

Talk about it with a partner.