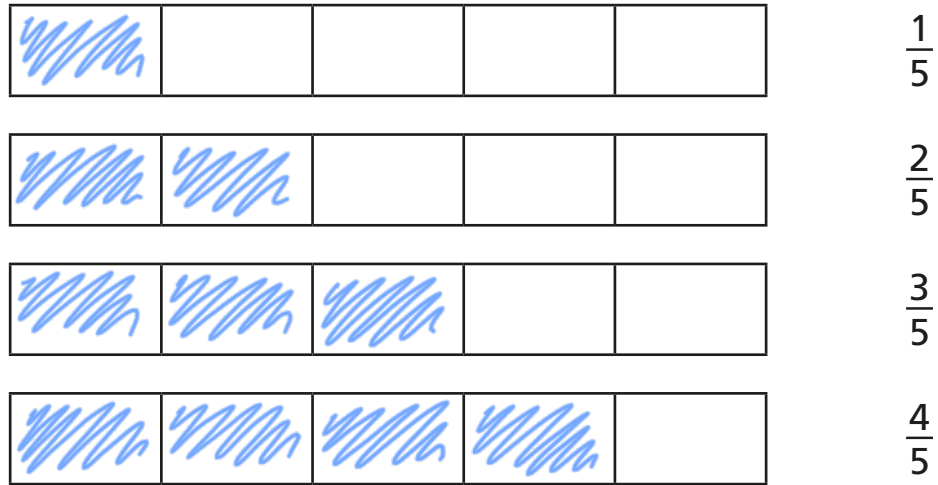


Order fractions

1 a) Shade the bar models to represent the fractions.



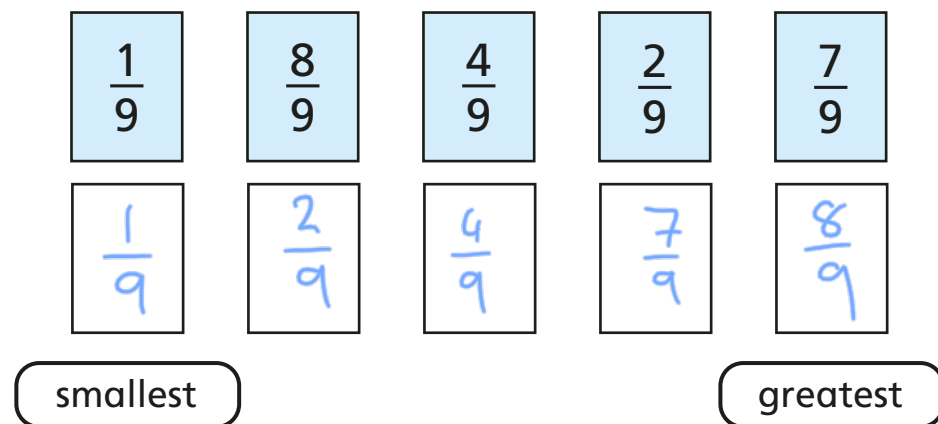
b) What do you notice?

c) Complete the sentence using the word bank.

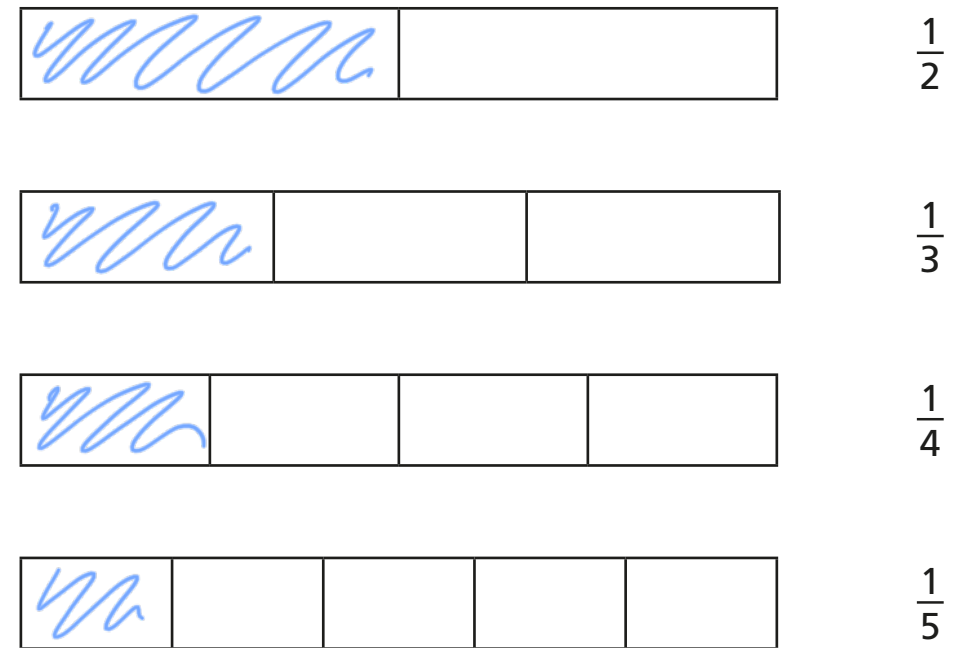
numerator denominator greater smaller

When fractions have the same denominator, the greater/smaller the numerator the greater/smaller the fraction.

2 Write the fractions in order, starting with the smallest.



3 a) Shade the bar models to represent the fractions.



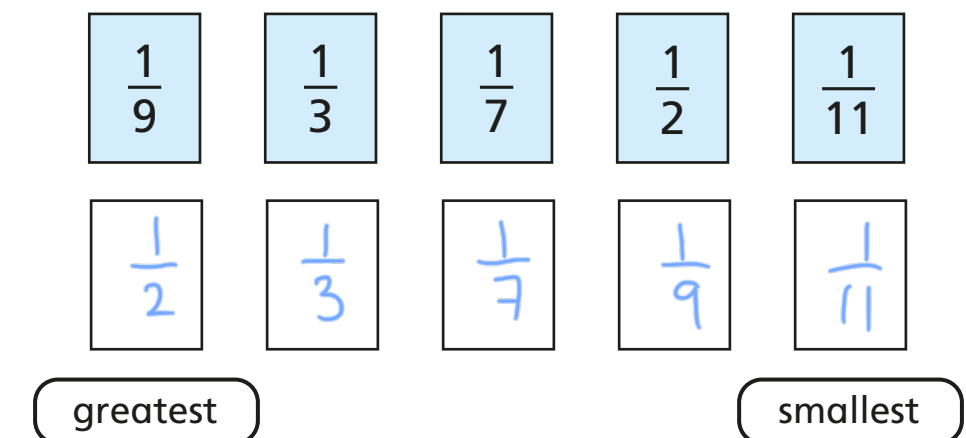
b) What do you notice?

c) Complete the sentence using the word bank.

numerator denominator greater smaller

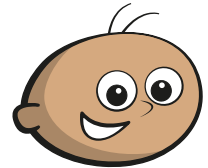
When fractions have the same numerator, the greater/smaller the numerator the smaller/greater the fraction.

4 Write the fractions in order, starting with the greatest.



5 Tommy and Dora are ordering fractions.

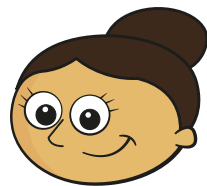
$$\frac{1}{5} \quad \frac{4}{15} \quad \frac{2}{3} \quad \frac{7}{15}$$



Tommy

I cannot order these fractions because the numerators and denominators are different.

I think I can use equivalent fractions to help me.



Dora

Who do you agree with? Dora

Talk about it with a partner.

6 a) Complete the equivalent fractions.

$$\frac{3}{5} = \frac{6}{10} \quad \frac{2}{9} = \frac{6}{27} \quad \frac{1}{7} = \frac{6}{42}$$

b) Write the fractions in order, starting with the greatest.

$\frac{6}{9}$	$\frac{3}{5}$	$\frac{1}{7}$	$\frac{2}{9}$
$\frac{6}{9}$	$\frac{3}{5}$	$\frac{2}{9}$	$\frac{1}{7}$

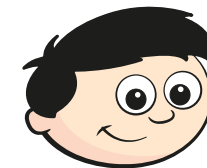
greatest

smallest

7 Dexter and Alex are ordering fractions from smallest to greatest.

$$\frac{1}{3} \quad \frac{2}{3} \quad \frac{5}{8} \quad \frac{1}{4}$$

a)



Dexter

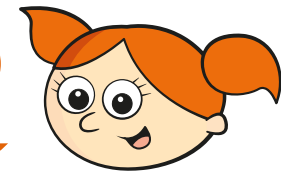
I am going to make the numerators the same.

Use Dexter's method to put the fractions in order.

$$\frac{1}{4}, \frac{1}{3}, \frac{5}{8}, \frac{2}{3}$$

b)

I am going to make the denominators the same.



Alex

Use Alex's method to put the fractions in order.

$$\frac{1}{4}, \frac{1}{3}, \frac{5}{8}, \frac{2}{3}$$

c) Whose method do you prefer?

Various

Talk about it with a partner.

