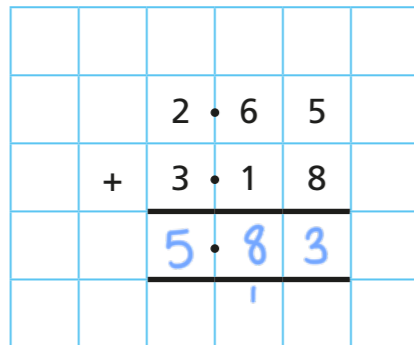


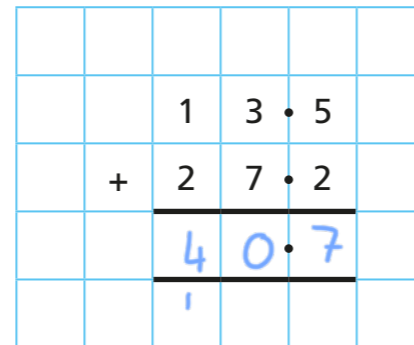
Adding and subtracting decimals with the same number of decimal places (problem solving)

1 Work out the calculations.

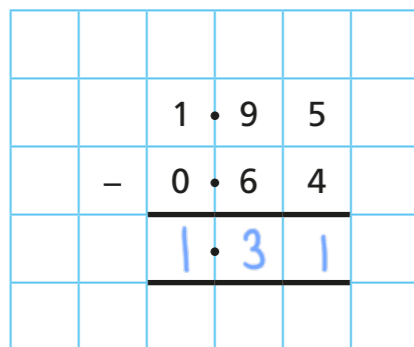
a) $2.65 + 3.18$



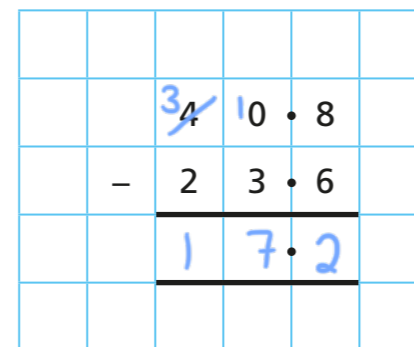
c) $13.5 + 27.2$



b) $1.95 - 0.64$



d) $40.8 - 23.6$



2 Work out the missing digits.

a) $4.\square + 1.\square = 5.\square$

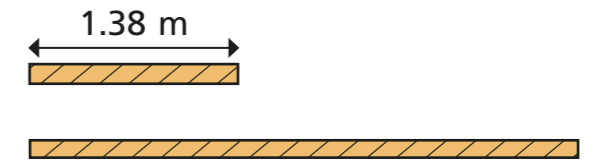
b) $\square.\square + 7.\square = 9.\square$

c) $4.\square + \square.\square = 9.\square$

d) $7.\square = 9.\square - \square.\square$

e) $7.\square = 9.\square - \square.\square$

3 A rope measures 3.65 m.
The rope is cut into two pieces.
The first piece is 1.38 m long.
a) How long is the second piece?

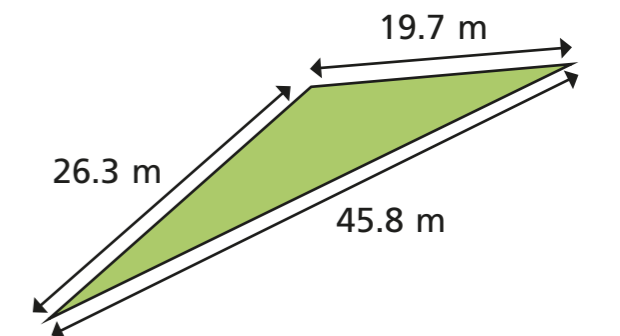


2.27 m

b) How much longer is the second piece of rope than the first piece?

0.89 m

4 Amir walks around the perimeter of a triangular field.
a) How far does Amir walk?



91.8 m

b) Does it matter which way around the park Amir walks?
Will he still walk the same distance?

5 Here are the prices of some items in a supermarket.



a) Jack buys all of these items.

Show that he gets £2.28 change if he pays with a £10 note.

$$\begin{array}{r} £3.48 \\ £1.95 \\ £0.89 \\ + £1.40 \\ \hline £7.72 \\ \underline{\quad\quad} \\ \quad\quad 2 \quad 2 \end{array} \quad \quad \quad £10 - £7.72 = £2.28$$

b) Rosie buys three of these items.

Two of the items are the same.

She pays £4.75

What has Rosie bought?

Two boxes of eggs and 1 bag of apples

Compare methods with a partner.

6 Here are some digit cards.



Use the digits to complete the calculation.

e.g. $\boxed{2} \boxed{9} \cdot \boxed{5} + \boxed{3} \boxed{8} \cdot \boxed{6} = 68.1$

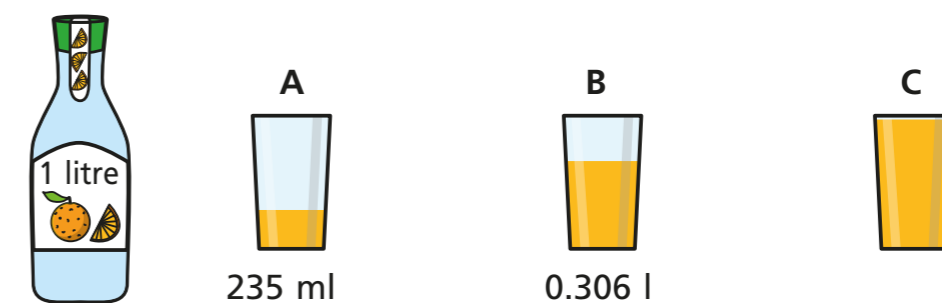
7 The mass of a watermelon is 3.2 kg.

The mass of a pineapple is 1.3 kg lighter than the watermelon.

What is the total mass of the pineapple and watermelon?

$\boxed{5.1}$ kg

8 A full bottle of juice is poured into three glasses: A, B and C.



How much juice is poured into glass C?

$\boxed{0.459}$ l

9 The table shows the amount of rainfall on Monday to Friday in a town.

Day	Mon	Tue	Wed	Thu	Fri
Rainfall (cm)	1.7	2.5	3.0	4.4	2.8

The total rainfall for Monday to Wednesday was equal to the total rainfall on Thursday and Friday.

Complete the table.

