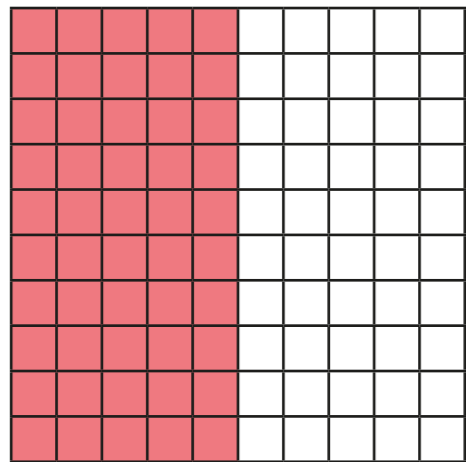


# Halves and quarters

1 Half of the hundred square is shaded.



a) How many hundredths are shaded?

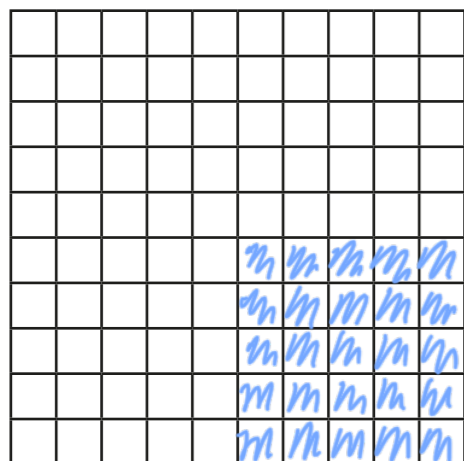
b) How many tenths are shaded?

c) Complete the equivalent fractions.

$$\frac{1}{2} = \frac{50}{100} \quad \frac{1}{2} = \frac{5}{10}$$

d) Write  $\frac{1}{2}$  as a decimal.

2 Here is a blank hundred square.



a) Shade  $\frac{1}{4}$

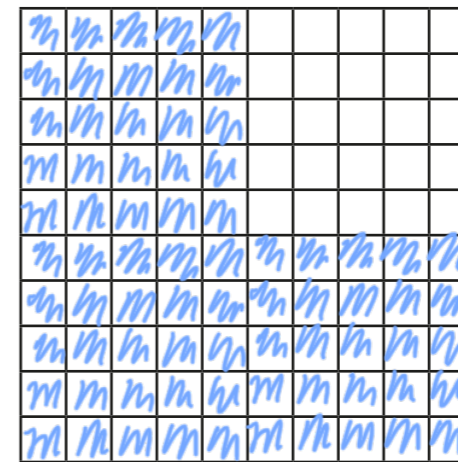
b) How many hundredths are shaded?

c) Complete the equivalent fraction.

$$\frac{1}{4} = \frac{25}{100}$$

d) Write  $\frac{1}{4}$  as a decimal.

3 Here is a blank hundred square.



a) Shade  $\frac{3}{4}$

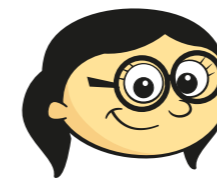
b) How many hundredths are shaded?

c) Complete the equivalent fraction.

$$\frac{3}{4} = \frac{75}{100}$$

d) Write  $\frac{3}{4}$  as a decimal.

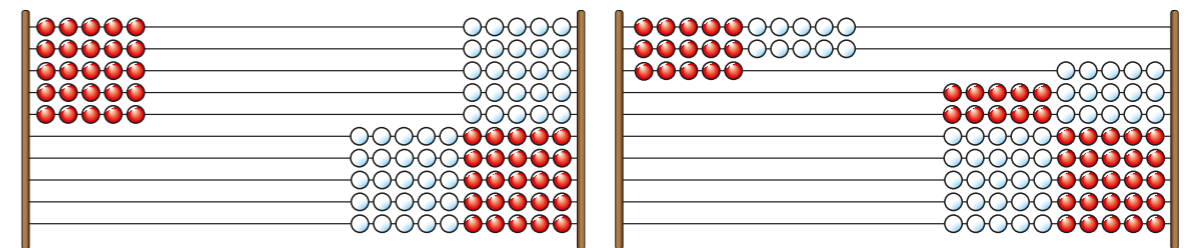
4



I don't need to shade a hundred square to write  $\frac{3}{4}$  as a decimal because I already know what  $\frac{1}{2}$  and  $\frac{1}{4}$  are as decimals.

How does this help Annie?

5

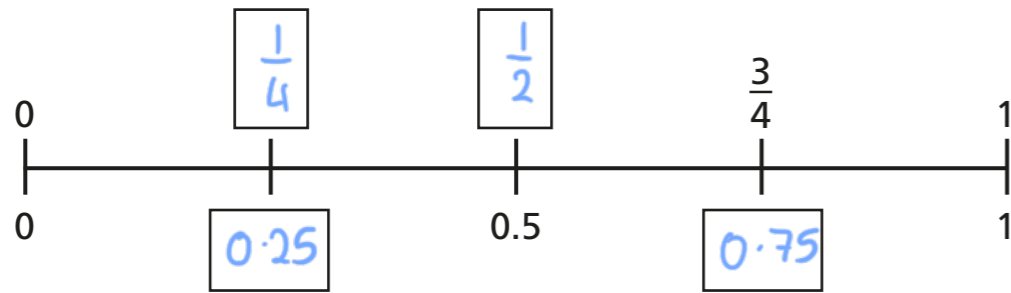


Both Rekenreks represent one quarter.

Is the statement true or false? true

Talk about it with a partner.

6 Fill in the missing fractions and decimals on the number line.



7 Complete the equivalent fractions and decimals.

a)  $\frac{25}{100} = 0.25$       e)  $\frac{25}{100} = \frac{1}{4}$

b)  $\frac{75}{100} = 0.75$       f)  $\frac{3}{4} = \frac{75}{100}$

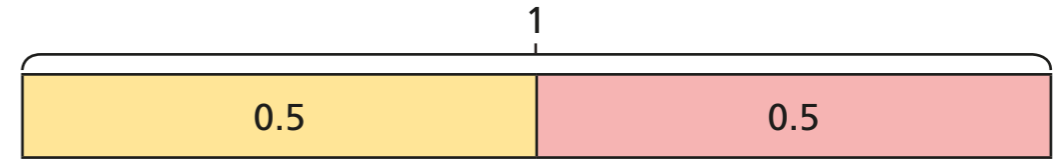
c)  $\frac{1}{4} = 0.25$       g)  $0.5 = \frac{1}{2}$

d)  $\frac{3}{4} = 0.75$       h)  $\frac{50}{100} = \frac{1}{2}$

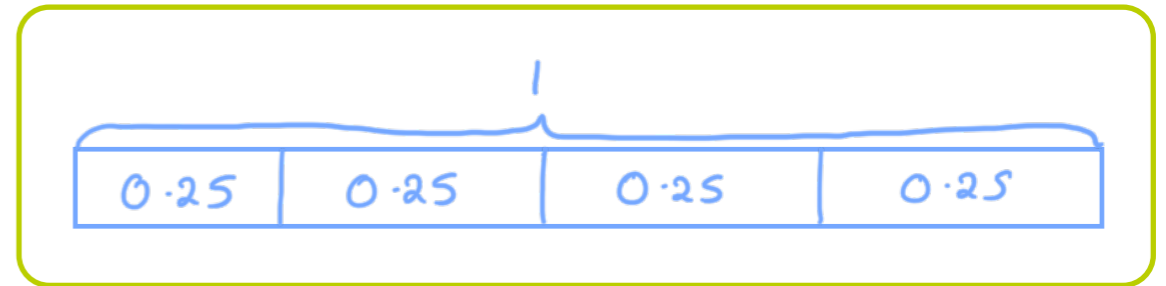
8

$0.5 + 0.5 = 1$

This bar model shows that  $\frac{1}{2}$  is equivalent to 0.5



Draw a bar model to show that  $\frac{1}{4}$  is equivalent to 0.25



9

Use your knowledge of equivalent fractions to convert between fractions and decimals.

a)  $\frac{2}{4} = 0.5$       d)  $0.25 = \frac{6}{24}$

b)  $\frac{5}{20} = 0.25$       e)  $\frac{34}{68} = 0.5$

c)  $0.75 = \frac{21}{28}$       f)  $0.75 = \frac{300}{400}$

