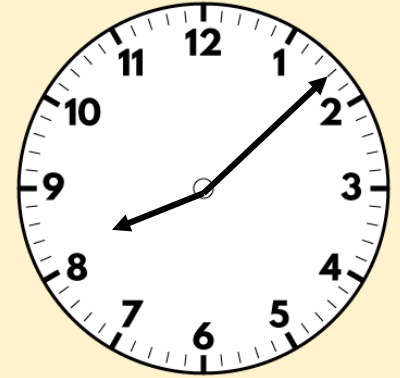


Flashback Friday

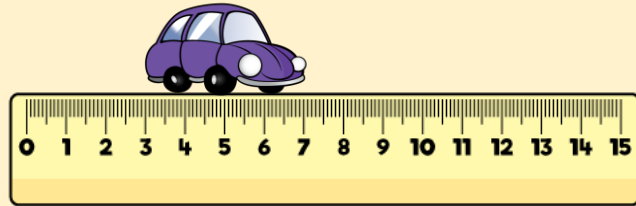
There are 16 flashback questions for you to try. The answers are on the end slides.

- 1) A bottle is 160 mm tall. A jug is 2l cm tall.
Complete the sentence using **taller** or **shorter**.

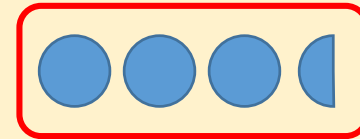
The bottle is _____ than the jug.



- 2) How long is the toy car?



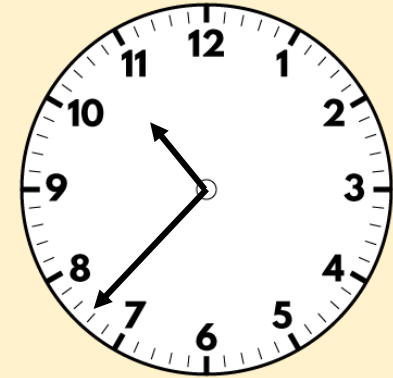
- 3) One ● represents 4 people.
Use the symbol to represent 18 people.



- 4) What is 100 more than 345?

1) Compare using $<$, $>$ or $=$

456 centimetres 4 metres



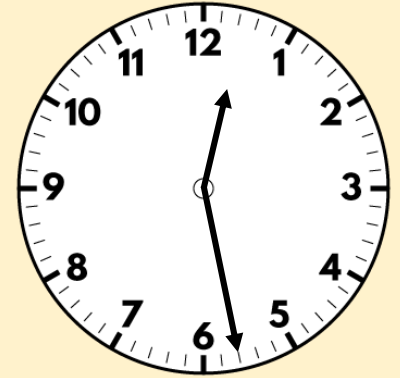
2) How long is the five pound note?



3) Draw a line 8 cm long.

4) Divide 56 by 8

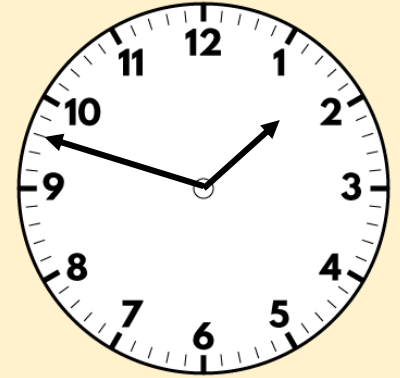
1) A pencil case is 13 cm long. A book is 9 cm long.
How long are they altogether?



2) How many centimetres are the same as 4 metres?

3) Draw a line 30 millimetres long.

4) What is the difference between 239 and 731?



1) A school hall is 21 m and 50 cm long.
Class 4's classroom is 13 m and 25 cm shorter.
How long is Class 4's classroom?

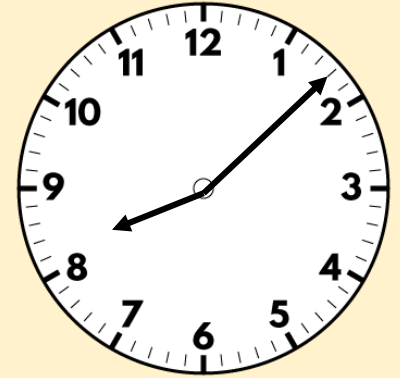
2) How many centimetres are equal to 70 millimetres?

3) Draw a line that is 5 cm and 4 mm long.

4) What is 6×20 ?

- 1) A bottle is 160 mm tall. A jug is 2l cm tall.
Complete the sentence using taller or shorter.

The bottle is shorter than the jug.

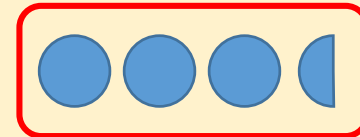


- 2) How long is the toy car?



4 cm

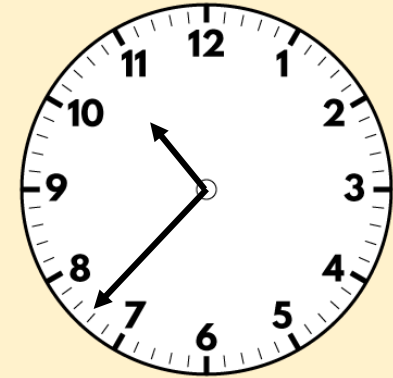
- 3) One ● represents 4 people.
Use the symbol to represent 18 people.



- 4) What is 100 more than 345? 445

1) Compare using $<$, $>$ or $=$

456 centimetres $>$ 4 metres



2) How long is the five pound note?

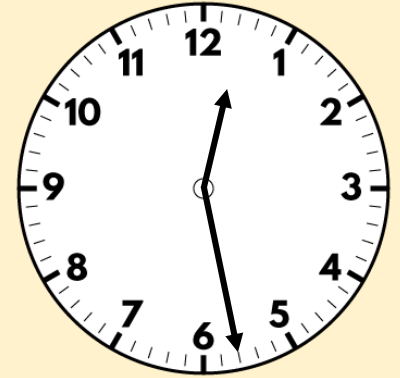


12 cm and 5 mm

3) Draw a line 8 cm long.

4) Divide 56 by 8 7

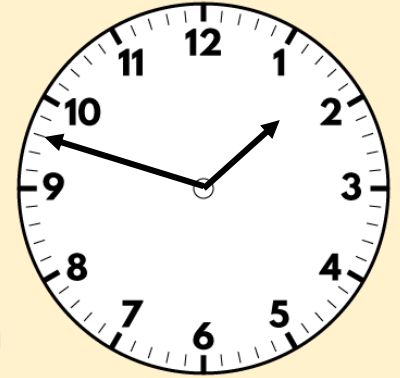
- 1) A pencil case is 13 cm long. A book is 9 cm long.
How long are they altogether? **22 cm**



- 2) How many centimetres are the same as 4 metres?
400 centimetres

- 3) Draw a line 30 millimetres long.

- 4) What is the difference between 239 and 731? **492**



- 1) A school hall is 21 m and 50 cm long.
Class 4's classroom is 13 m and 25 cm shorter.
How long is Class 4's classroom? **8 m and 25 cm**
- 2) How many centimetres are equal to 70 millimetres? **7 cm**
- 3) Draw a line that is 5 cm and 4 mm long.
- 4) What is 6×20 ? **120**