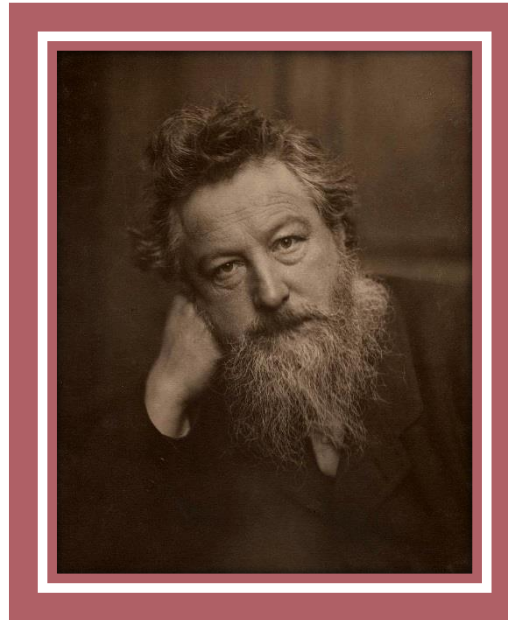


William Morris

William Morris



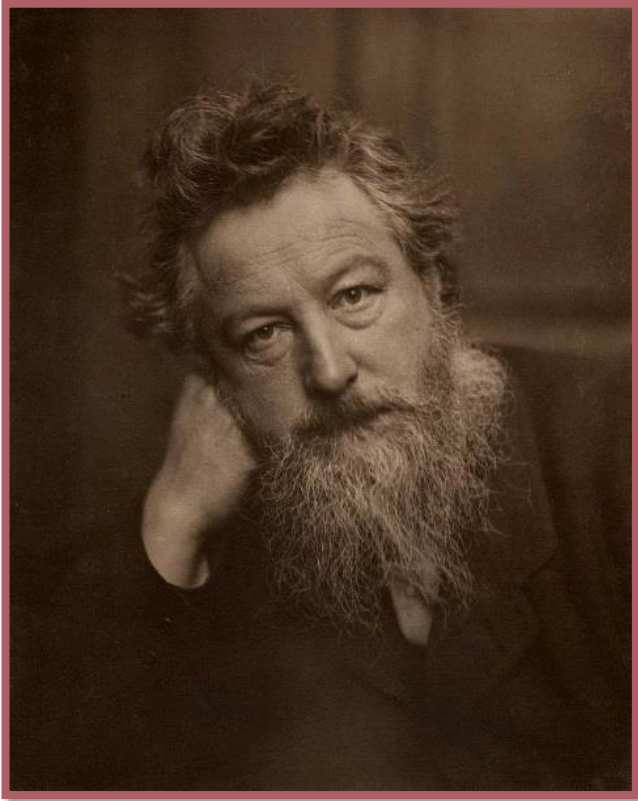
William Morris:

‘Have nothing in your house that you do not know to be useful, or believe to be beautiful.’

Aim

- To understand who William Morris was.
- To recognise examples of William Morris patterns.

Who Was William Morris?



William Morris was born on 24th March, 1834.

He was the son of a wealthy business man.

He originally was going to become a priest but decided to devote his life to art instead.

He became a poet, artist and manufacturer.

He had lots of friends who were writers, poets and artists.

His career in designing started when he decorated his own house in London.

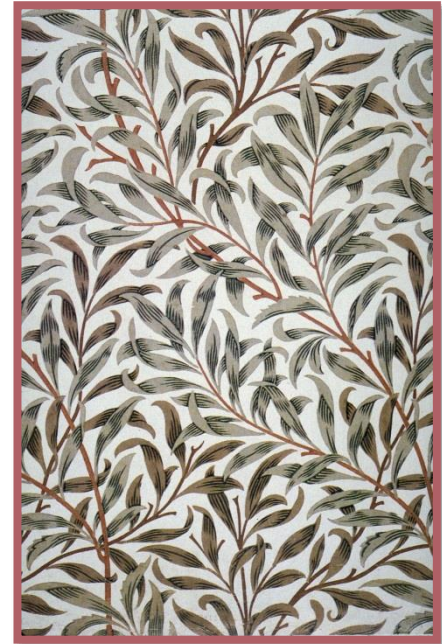
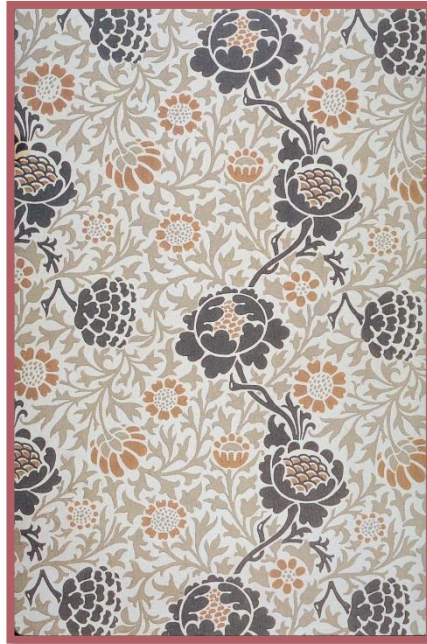
Who Was William Morris?

He made stained glass windows...



Who Was William Morris?

He made patterned wallpaper...



Who Was William Morris?

He made tapestries...



William Morris – The Style



- William Morris is very famous for his wallpaper designs. He created some beautiful designs, the likes of which had never been used before. In fact, wallpaper before his day was quite plain.
- William Morris, who was also an environmental campaigner, created designs of floral patterns (patterns inspired by flowers and plants) which were repeated many times by block printing.

William Morris – The Technique



- What William Morris did was to make designs of floral patterns that could be repeated many times by block printing techniques on large pieces of paper to make patterned wallpaper.

An Influential Artist...



“Windrush” 1881 - 83



“Tulip and Willow” 1873



“African Marigold” 1876



“Trellis” 1862



“Daisy” 1864



“Acanthus” 1875



“Strawberry Thief” 1883



“Peacock and Dragon” 1878

William Morris

1) What was William Morris most famous for designing?

William Morris was most famous for designing_____

2) What do William Morris' patterns have in common?

William Morris designs _____ prints

3) How were William Morris patterns repeated?

William Morris patterns were repeated using

floral

block printing

wallpaper

Task 2



L.O: To describe the works of

William Morris

twinkl



nature

symmetrical

realistic colours

Strawberry Thief



Merton Abbey



Trellis





Larkspur



Snakeshead

L.O: To describe works by William Morris



William Morris' designs

Vocabulary
repeating
pattern
symmetrical
colours
natural
animals
leaves